

Company Profile



GRAND TARGET TECHNICAL SERVICES LLC



CONTENTS

- I. INTRODUCTION
- II. ORGANIZATION CHART
- III. LIST OF PROJECTS
- IV. SAFETY PLAN
- V. QUALITY ASSURANCE PROGRAM
- VI. LIST OF STANDARD INSTRUCTION

ATTACHMENTS

- 1. PROJECT PHOTOGRAPHS
- 2. TRADE LICENSE
- 3. VAT REGISTRATION



Dear Sir,

Grand Target Technical Services LLC is well established in the United Arab Emirates and its activities majorly comprise buildings and the infrastructure scope; particularly, roads, piping systems and their associated civil works.

Grand Target Technical Services LLC can confidently commit, undertake and execute considerable and reasonable volume commensurating to its latent capacity and ambition.

However, **Grand Target Technical Services LLC** is able to provide any required equipment if not within its current fleet, in accordance with the needs of the contracted works.

Finally, we like to introduce ourselves to you as a medium company in size, however, built and structured in an experienced and scientific manner. We acquire the relevant components of successful performance, mostly, professional experience and knowledge of the contracting field in U.A.E.

We trust that the above will match your interest and look forward to considering us in your future projects.

Should you require further details or clarifications, please do not hesitate to contact us by e-mail at info.gtarget@gmail.com

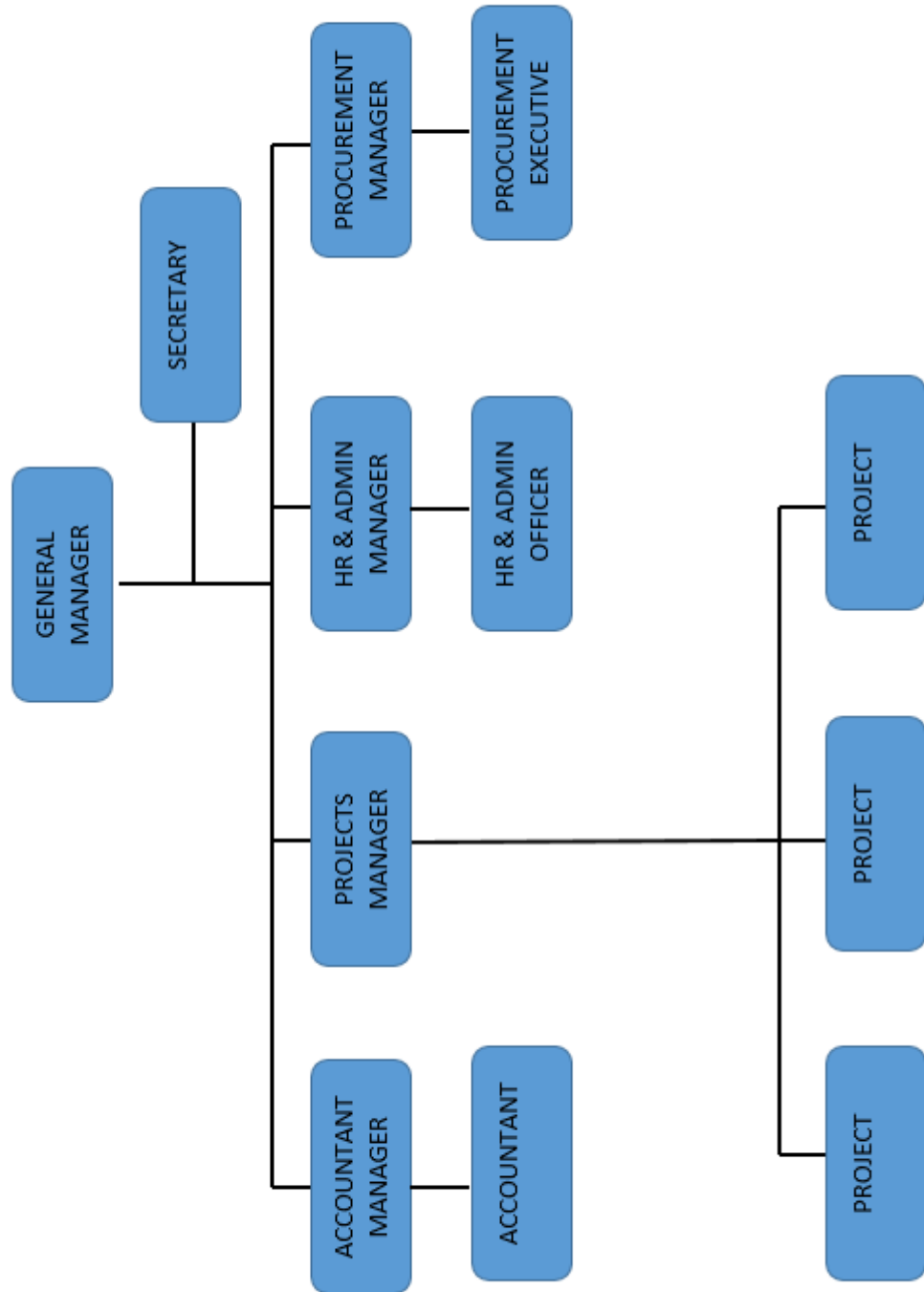
Yours Truly,

A handwritten signature in blue ink, appearing to read 'Mohamad Al Atiyat'.

Mohamad Al Atiyat
General Manager



ORGANIZATIONAL CHART





**Company Profile
List of Project & Status**

Sl. No	Project Name	Client	Status
1	DS220 House Connection and Miscellaneous Works	Nael Construction and Contracting	Completed
2	DS198/1 Upgrading Subsidiary Sewer Pumping Station G1 to G7	Al Nubla General Contracting LLC	Completed
3	Maintenance Improvement and Upgrade of Sheikh Hamdan Bin Abdulla Road – Al Fujairah	ETHPE Contracting LLC	Completed
4	Arcadia Secondary School	Al Shirawi Contracting Co. LLC	Completed
5	House Connection Works – Wafi Hotel Complex & Mall Extension Phase 8	MKM Commercial Holdings LLC	Completed
6	Sewerage Line Connection – Ibn Battuta Mall	Larsen & Toubro Limited, Construction	Completed
7	Drainage work outside the plot for Main Connection – ADNOC (Studio City)	Amana Contracting & Steel Building Company WLL	Completed
8	Sewerage FIC Connection - JVC	Lootah Real Estate Development LLC	Completed
9	House Connection – Jumeirah Park (Clubhouse & Retail)	GBH International Contracting LLC	Completed
10	Construction of New 132/11kv Substation-BNYSSQUR	Larsen & Toubro Limited, Construction	Completed
11	Construction of Family B+G+4 & Bachelor G+S Accommodation at Warsan II	Ginco General Contracting LLC	Completed
12	Modification of Connection of the Main Manhole of Nakheel (House Connection)	Vakil Ghulam Abbas Wahid Ali	Completed



Company Profile

List of Project & Status

12	MBR-Package 49, Installation of Interlock & Kerbstone	De Tech Contracting LLC	Completed
13	TSE TIE at Palm Jumeirah, Buffer Tank & related Civil Works	Aresco Engineering & Trading LLC	Completed
14	House Connection	Al Rams Prime Construction	Completed
15	Proposed Park View Tower B+G+UG+4P+19 floors Residential Bldg.	Tak Construction LLC	Completed
16	New Gate Acces, Entrance & Exit	Open Eye Community Owners Association Mgt. Services	Completed
17	Residential Villa G+1, Al Barsha South 5 th , JVT01IVIL030 & JVT01IVIL031	Platinum House Contracting	Completed
18	Dubai land residence complex (DLRC) Phase-1 Area-4. Zone 2	ARCO Contracting LLC	Completed
19	Construction, Supply, Installation, Testing & Commissioning of Marasi – 132/11KV S/S and Associated Works	AL FANAR	Completed
20	R1075 – INTERNAL ROADS at NAD AL SHEBA 2, Sewerage Manhole Refurbishment Works	ASGC Construction LLC	On-going
21	G+1+Roof+Service Block+Garde Room+Parking+Boundary Wall Plot No. 2813448, House Connection Works	Granada Europe Engineering Construction LLC	Completed
22	Etihad Rail Project – Stage Two – Package 2B, Kizad Ducts	Elite Road Supplies Co. - ECO	Completed
23	R1075 – Internal Roads at Nad Al Sheba 2, Removal and Laying of Kerbstone	ASGC Construction LLC	On-going



Company Profile

List of Project & Status

24	HOUSE CONNECTION (various areas)	Dubai Municipality	Completed
25	Construction, Supply, Installation, Testing & Commissioning of Umm Ramool – 132/11KV S/S and Associated Works	AL FANAR	Completed
26	Masjid Shekah for Islamic Affairs & Charitable Activities Department on Plot No.345-415, Business Bay (Pipe Works)	AL SHAFAR	Completed
27	Construction of G+4 Floor, (Liwan 2) Wadi Al Safa, Dubai (House Connection Works)	AL ISHRAK CONTRACTING CO. LLC	Completed
28	Ground + 1 + Roof - Plot No. 3341668 (House Connection Works)	ALANDLOS CONTRACTING LLC	Completed
29	Residential & Commercial Tower at Plot No. 345-883, Burj Khalifa Dubai – Utility Service Connection for MEP	SHAPOORJI PALLONJI MIDEAST LLC	On-going

DS220 HOUSE CONNECTION AND MISCELLANEOUS WORKS



DS220 HOUSE CONNECTION AND MISCELLANEOUS WORKS



DS220 HOUSE CONNECTION AND MISCELLANEOUS WORKS



DS220 HOUSE CONNECTION AND MISCELLANEOUS WORKS



DS220 HOUSE CONNECTION AND MISCELLANEOUS WORKS



DS220 HOUSE CONNECTION AND MISCELLANEOUS WORKS



DS220 HOUSE CONNECTION AND MISCELLANEOUS WORKS



DS220 – HOUSE CONNECTION AND MISCELLANEOUS WORKS



DS220 HOUSE CONNECTION AND MISCELLANEOUS WORKS



DS220 HOUSE CONNECTION AND MISCELLANEOUS WORKS



DS220 HOUSE CONNECTION AND MISCELLANEOUS WORKS





DS198/1 – Upgrading Subsidiary Sewer Pumping Station G1 to G7 – Al Nubla Gen. Contracting LLC





DS198/1 – Upgrading Subsidiary Sewer Pumping Station G1 to G7 – Al Nubla Gen. Contracting LLC



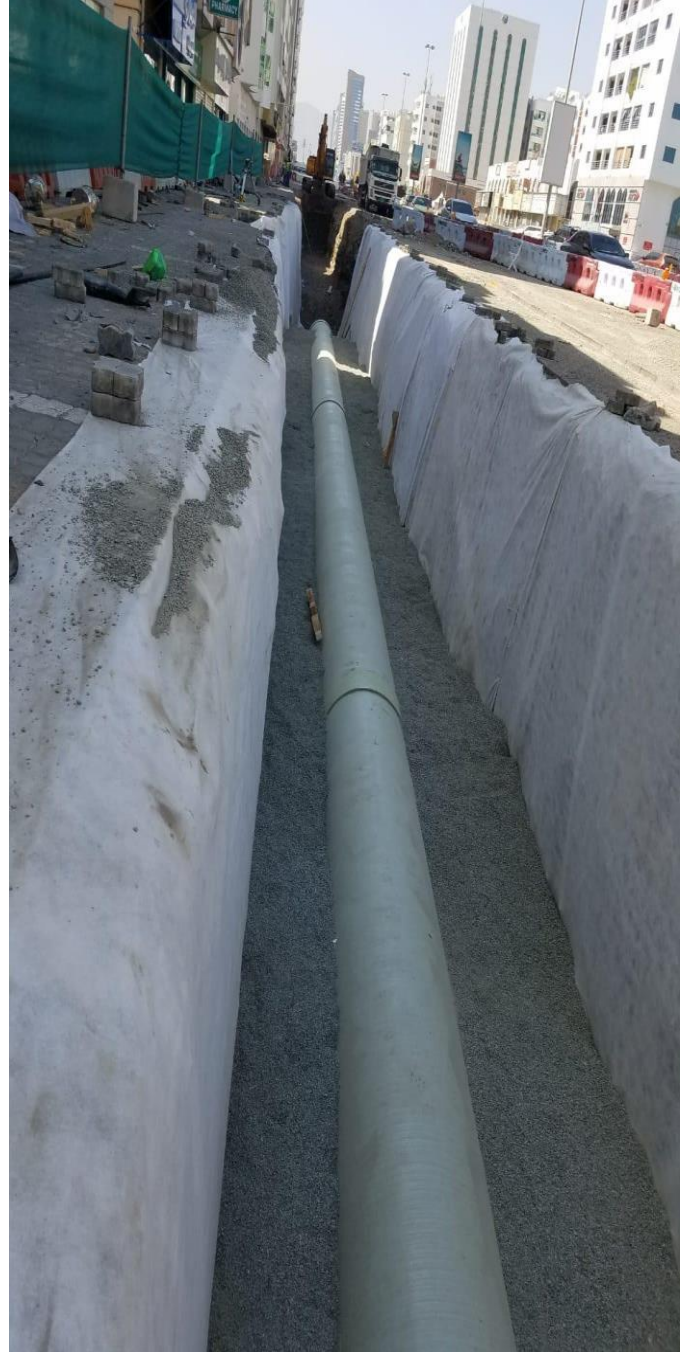
DS198/1 – Upgrading Subsidiary Sewer Pumping Station G1 to G7 – Al Nubla Gen. Contracting LLC



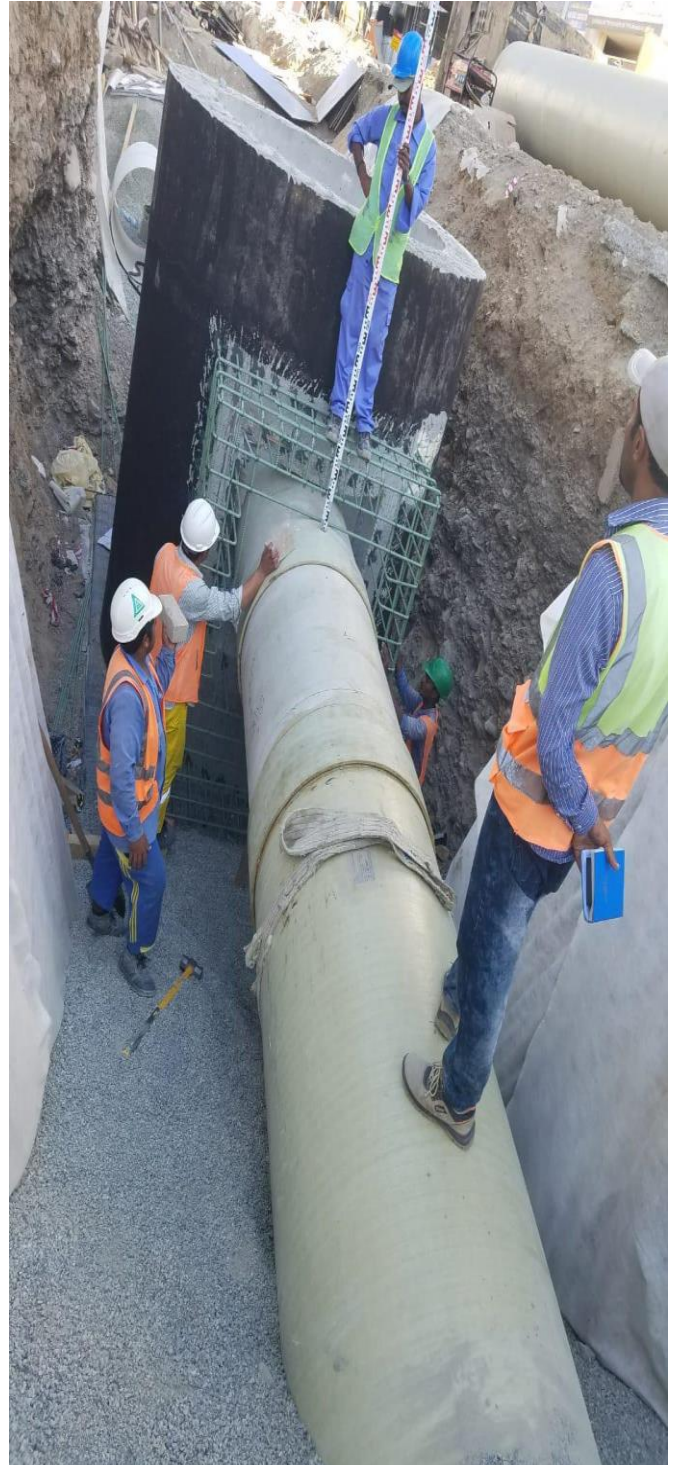
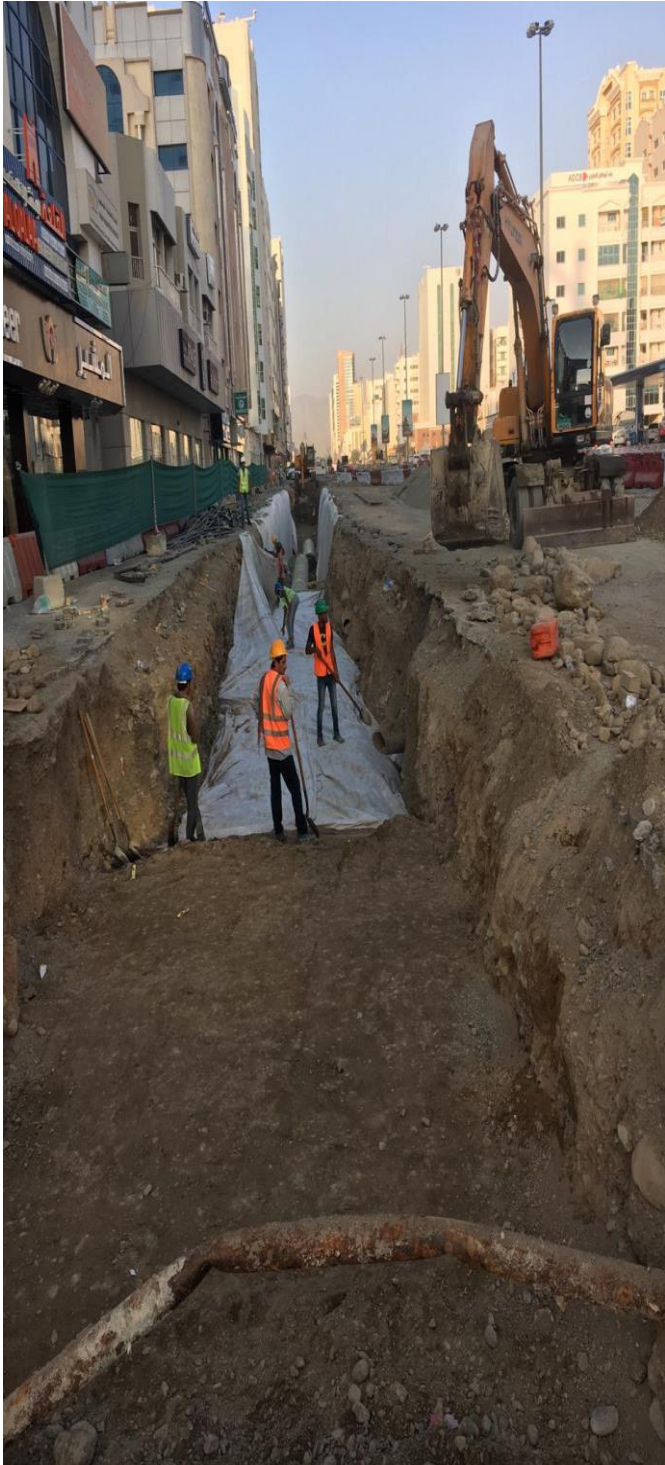
DS198/1 – Upgrading Subsidiary Sewer Pumping Station G1 to G7 – Al Nubla Gen. Contracting LLC



Maintenance Improvement & Upgrade of Sheikh Hamdan Bin Abdulla Road - Al Fujairah – ETHPE



Maintenance Improvement & Upgrade of Sheikh Hamdan Bin Abdulla Road - Al Fujairah – ETHPE



Cast Construction –



Cast Construction -



Cast Construction –





CONTENTS

- 1. Company Safety Policy**
- 2. Introduction**
- 3. Project Title and Scope of Work**
- 4. Safety Organization**
- 5. Grand Target Safety Policy and Responsibilities**
- 6. Hazard Identification and Traffic Plan**
- 7. Safety Inspections**
- 8. Safety Reports and Records**
- 9. Work Permit**
- 10. Welding & Cutting Equipment**
- 11. Personnel Protective Equipment**
- 12. Tools and Portable Power Tools**
- 13. Ladders**
- 14. Cartridge Operated Tools**
- 15. Electrical Installation and Equipment**
- 16. Scaffolding**
- 17. Cranes and Lifting Equipment**
- 18. Mechanical Equipment**
- 19. Transportation and Traffic Control**
- 20. Injury and Damage Reporting**
- 21. Excavations**
- 22. Fire Prevention**
- 23. Flammable Liquids**



- 24. Formwork**
- 25. Abrasive Sand Blasting & Painting**
- 26. First-aid Facilities**
- 27. Dust Control (Camp and Construction Areas)**
- 28. Job Site Inspectors**
- 29. General Safety Rules**
- 30. Hazardous Material and Waste Management.**
- 31. Security Procedures**



1. COMPANY'S POLICY STATEMENT.

It is the Company's policy to implement the Loss Prevention Program, to prevent injuries and damages to property on and off the job.

It is the policy of our company to provide and maintain safe and healthy working conditions and to follow operating practices that safeguard all employees, which will result in efficient operations. In all instances safe work practices takes over shortcuts and expedient actions.

In keeping with this policy, all members of the management and supervision, of whatever grade, are reminded that safety must take equal importance with cost and construction, and they have moral and legal responsibility for the safety and health of all the employees under their control.

All employees of other concerns are reminded that they too have a moral, if not legal, the responsibility to protect themselves and any person who may be affected by their action.

Joint cooperation of management and employees in observance of this policy will provide safe working conditions and accident free performance to our mutual advantage.

Company believes that the Accidents & Losses can be prevented.

**Mohamad Al Atiyat
General Manager**



2. INTRODUCTION.

This Safety Program complies with the provisions of the following:-

- UAE laws and Regulations;
- Client's Construction Safety Manual and HS Specification;
- Contract and related requirements, specifications and standards:

3. PROJECT TITLE AND SCOPE OF WORK.

As per contract

4. SAFETY ORGANIZATION.

Please find Attachment "2"- the Safety Organization Chart.

5. SAFETY POLICY AND RESPONSIBILITIES.

Grand target reinforces its policy that an active and supportive management organization is the key to preventing accidents; The Grand Target Project Manager has overall responsibility for the implementation and enforcement of this Safety Plan, and Grand Target line managers will be held responsible for all aspects of safety and loss prevention on this project.

All Grand Target employees, sub-contractors and vendors working under Grand Target on the project will comply with the safety procedures outlined in this Construction Safety Plan.

Managers and workers will receive orientation training and continuing education on safety. Each manager, supervisor and worker has a fundamental part of his responsibilities to develop safety consciousness, eliminate hazards, and protect the environment. Orientation training will be given to all employees when they first report to the job site and refresher training will be given on a periodic basis. In compliance with specific requirements in the Saudi Aramco Construction Safety Manual, all craft or crew supervisors will plan and hold a 10 minute safety discussion with their workers at least one day in each working week. This meeting will cover related safety subjects covering the work in progress and minutes will record the discussions.

Topics to be discussed in Grand Target orientation training to all employees included the following items. During the weekly field safety meetings, certain topics from this list of subjects will be selected for further discussions:

- Purpose of Safety and Loss Prevention Plan



- Policy
- Personal Conduct of Employees
- Accident Notification
- Installation Practice for Safety Program
- General Safety Precautions on the Job Site
- First Aid
- Emergency Procedures
- Safety Instructions and Training
- Accident Reporting
- Sanitation
- Fire Prevention/Protection
- Safety Work Practices
- Motor Vehicle Safety
- Operating Rules
- Transportation of Personnel
- Fueling and Handling of Fuel Products
- Machinery and Mechanized Equipment
- High temperature Working Environment
- Emergency Medical Services

Grand Target overall safety objective is to proactively limit accidents and injuries to workers and loss of materials and property during all phases of the project, and especially during the construction phase where the risk of injury and losses are at their greatest. This Construction Safety Plan provides a basis on which Grand Target and sub-contractors will operate in UAE under the guidance that all activities will be first, over all others, conducted in a safe manner.

As stated, the Safety Officer reports directly to the Safety Manager on all safety matters as required. The Safety Officer's duties included the following functions:

- Maintains copies of rules and regulations regarding this Safety Plan and client's safety requirements; Particular attention will be made to ensure that the work permits are obtained for restricted areas in accordance with contract.
- Advises management on legal and contractual requirements as applicable to safety infringements.
- Assists in training of personnel and encourages participation in the safety competition.
- Carries out safety inspections and prepare reports; A monthly safety report including any injuries for the month will be prepared on construction activities of Grand Target and sub-contractors, based on the inspections.
- Check cranes and lifting equipment to ensure that the operators are licensed and that the equipment is safe to use for the intended task. Maintenance men will ensure that the controls of the equipment they



- are working on will be properly locked and tagged in the off position before leaving.
- Investigates any accidents and prepare preliminary report.
- Conducts pre-construction meetings.
- Monitors Grand Target and sub-contractors' safety performance and prepare evaluation.
- Coordinates safety activities between Grand Target and other contractors.

6. HAZARD IDENTIFICATION & TRAFFIC PLAN.

The Hazard Identification & Traffic Plan (HIP) included herein on Attachment “4” is a sample plan developed specifically by Grand Target for every Project.

The definition of “Hazard” is the possibility of loss and/or injury to people and/or property. Hazard areas have been identified as the job site and storage/fabrication yards. For this Project, Class “A”, “B” and “C” hazards are possible.

Class “A” Hazards are conditions or practices likely to cause permanent disability, loss of life or body parts and/or extensive loss of structure, equipment or materials.

Class “B” Hazards are conditions or practices likely to cause serious injury or illness (resulting in temporary disability) or property damage that is disruptive, but less severe than Class “A”.

Class “C” Hazards are conditions or practices likely to cause minor (non-disability) injury or illness or non-disruptive property damage.

The project has been evaluated in terms of the above three hazards and specific hazards in each class have been identified. A corrective action is recommended in Attachment “4” for each hazard.

POTENTIAL RISK AREAS AT JOB SITE.

- | | |
|-------------------------|------------------------------------|
| I) Heavy Equipment | X) Scaffolding |
| II) Material Handling | XI) Traffic Circulation |
| III) Electrical | XII) Painting and Adhesives |
| IV) Welding and Cutting | XIII) Concrete Placement |
| V) Power tools | XIV) Form Work |
| VI) Sanitation | XV) Plumbing Pressure Testing |
| VII) Building Erection | XVI) Compressed Air Equipment |
| VIII) Excavation | XVII) Transport, Storage & Filling |
| VIX) Heavy Lift. | |



7. SAFETY INSPECTIONS.

To assure all the items included in the contract and Project site conditions are not overlooked and to achieve uniformity, an inspection checklist has been developed and is included in Attachment “5”. This checklist does not replace any ongoing safety inspection procedures but reinforces our safety program efforts. These safety inspections will be carried out weekly by Grand Target safety personnel, accompanied by the client representatives.

The inspection check sheet will be submitted to client as part of the weekly job site progress meetings. Corrective action items on the inspection checklist can be a topic for discussion at the weekly progress meetings, with follow-up action items being discussed until the items are cleared out.

8. SAFETY REPORTS AND RECORDS.

The Safety Officer will prepare the Monthly Safety Report; copy included as Attachment “6” and it will be attached with the Monthly Progress Report. Minutes of the Weekly Safety Meeting will also be prepared by the Safety Officer and submitted with the Weekly Progress Report.

9. WORK PERMIT

No work in a restricted area or any potentially hazardous operation, which should be controlled, will be carried out without a valid work permit.

A work permit authorizes specific construction maintenance, inspection, demolition or repair work to be conducted in a restricted area and to reduce potential hazards in operation. This serves as a record that steps have been taken to ensure safe working condition in all areas.

Types of work permits:

- Release of Hazardous Liquids or gases
- Hot Work permits
- Cold Work permits
- Confined Space Entry
- Any specific requirements identified by the client

A job site tour will be conducted with work permit issued, before job starts and at job close out. The work requiring a work permit will not start before the permit is issued.

Work permit receiver must be on the immediate work area at all times. When receiver leaves the work area another receiver must be designated.



10. WELDING AND CUTTING EQUIPMENT.

Welding and cutting equipment will be of client approved type, maintained in good condition. Cylinders will be transported, stored and used securely fixed in the upright position. When not in use, they will be stored in a specially designated area with valve caps on. Longer storage of gas cylinders will be in covered sheds, covered roof and three sides.

- When lifted by crane, holders or trolleys will be used, approved by client.
- Various sets of oxygen and acetylene cylinders will be used at site at one time. The sets will be normally in the fabrication yard, in secure racks and separated.
- Ground return clamps will be attached to the work piece.
- Cable runs will be as short as possible and joints if any, will be with approved connectors.
- The generator will be equipped with an approved fire extinguisher.
- Electrodes will be removed from the holders when not in use.
- Holder will be in good condition and cables will have no defects.

Dry chemical fire extinguisher (A, B, C types) will be placed near the welders at all times. Proper shielding and dust mask will be provided for the welder.

11. PERSONAL PROTECTIVE EQUIPMENT

All personnel will be instructed to wear protective equipment at all times while working at their assigned tasks at the job sites. Different categories of workers in different areas will be given personal protective equipment as required by the job and potential hazards. For example, Class “C” hazard for an equipment operator working on a dusty environment, goggles and dust mask will be provided.

For persons wearing prescription eyeglasses, safety over wear goggles will be worn. If a worker is in a noisy area of over 90 dB for eight hours, he will be furnished hearing protection.

The below table lists the basic personal protective equipment to be provided to each worker:



COMPANY PROFILE HEALTH AND SAFETY PLAN

Worker Category	Hard Hat	Safety Shoes	Gloves	Safety Goggles	Face Shield	Ear Plugs	Safety Belt	Dust Respirator
Manager & Supervisor	x	x		x				
Foremen	x	x	x	x				
Equip. Drivers/ Operators								
Welders	x ⁴	x	x ⁵	x	x		x	x
Masons	x	x	x	x				
Carpenters	x	x	x	x				
Electricians	x ²	x	x	x ³				
Plumbers	x	x	x	x				
Pneumatic Tools Operator	x	x	x	x				
All others	x	x	x	x				

Note:

1. When required
2. Electrician type hard hat
3. Rubber gloves where required
4. Welding hood (leather, welder jacket where required; shade, goggles
5. Fire Resistant.

All personal protective equipment will meet ANSI/OSHA or their equivalent requirements. Any worker 1.82 meters above ground without the protection of a guard rail system, or in a confined space, will wear a full body harness and standard lanyard. Respiratory system will be used anytime workers could inhale air contaminants.

Respiratory protection will be used anytime workers could inhale air contaminants exceeding permissible exposure limits, and when an oxygen deficient atmosphere could be encountered. Breathing quality air will be supplied to the worker through the use of an air fed hood or self-contained breathing apparatus.



12. TOOLS AND PORTABLE POWER TOOLS.

All tools will be of best quality free from any defects, well maintained, and will be suitable for the job. The tools will be cleaned and stored properly to protect their usefulness.

Tools such as shovels will be used for small excavations where mechanized equipment is not advisable. Screw drivers, hammers, pliers, wrenches, pipe wrenches and other small electrical tools will be used when the conditions permit.

Class "A" hazard exists in the use of small power tools. For this, only 120 volts, single phase grounded or double insulate, portable tools on GFI circuits will be used and guards will be provided for equipment like grinders and hand saws.

13. LADDERS.

The use of metal ladders to perform electrical work or to work on electrical components is prohibited. In these cases, only suitable wood or fiberglass ladders will be used.

Every work place ladder will be safe tied off and have protection against falls of men and material. A safe means of getting up to and from every work place will be provided.

Ladders will be used for entering and exiting from excavated trenches, to reach a platform or scaffolding of higher elevation. Ladders will be placed in the immediate work area every 25 feet.

Class "B" hazard exists with the use of ladders. For this, ladders will be in good condition. Ladders used will rise at least three rungs above the stepping off point for the ladder. Ladders will be securely and evenly supported on both sides and will not be footed on loose material.

14. CARTRIDGE OPERATED TOOLS AND CARTRIDGE CONTROL.

Cartridge operated tools must only be used by a qualified individuals who have undergone training in the use of such tools and are aware of all the hazards associated with them.

All cartridge tool users must wear full-face protection and earmuffs when operating the tool. Only the designated cartridge as recommended by the manufacturer shall be used. It is very important that the correct size cartridge is used and that it is appropriate for the tool being used. Operators should ensure that no one is working directly under or in direct line of the fixing device. All personnel should be made aware when and where cartridge tool operations are taking place. If the material being fixed is liable to splinter protective screens must be erected or the area

surround area cleared of persons. When working off ladders scaffolding or ledges – extra care must be taken in case of the tool recoil after firing.

All cartridge tools must be registered and kept in a clean dry room in a lockable box. A person is designated to be responsible for maintaining the tool record the name of the individual allocated the tool and will record its return. Cartridges shall be similarly stored and the number and type issued shall be recorded. A record shall be maintained for each tool showing when it was overhauled, and when any repairs were carried out and by whom. All such tools must be thoroughly overhauled and tested at least annually.

15. ELECTRICAL INSTRELLATION AND EQUIPMENT.

All appliances, materials and equipment used in temporary electrical installations will be of client approved type and maintained in good work condition. The temporary installation will be constructed, installed, protected, worked and maintained so as to prevent danger. These types of installations will be used for temporary lighting and for the use of portable tools.

All electrical circuits will be protected by Ground Fault Interrupt devices (GFI).

Class “A” hazard exists with the electrical installation and use of portable tools. All work of this nature will be carried out by or under the supervision of a qualified craftsman. All portable tools will be 120 volts, single phase, double insulated and will be properly grounded.

16. SCAFFOLDING.

All scaffold structures will be erected with approved metal components; will be erected and dismantled by experienced men and will be stored properly to prevent damage and permit easy access for use. Scaffold plans will be submitted to client for approval.

An adequate foundation base is essential to erect scaffolds. Timber plates of not less than 4 cm thick and 25 cm will be used to spread load on surfaces like sand, made-up ground, slippery surfaces, asphalt pavement and wooden floors. Smaller timber like pads will be used on hard surfaces like concrete or rock to prevent the base plate from striking off.

Standards will be pitched on 15 x 15 cm steel base plates. Inner row of standard will be placed up to 38 cm from the face of the building.

Ledgers will be fixed 90 degrees to standards and will be horizontal. They will also be vertically spaced at two meters to allow for adequate headroom.



Bracing will be extended diagonally to the full height of the scaffolds at an angle as near as possible 45 degrees.

Ties will be used at every 20 feet and at each vertical 13 feet level as necessary to prevent movement of the scaffolds towards or away from the structure.

All decking will be closed planks 5 cm thick to the full width of the scaffold, clean from oil and slippery materials and will be secured in position to prevent displacement. Supports for planks will never be more than 3 meters apart. Planks will extend over the end supports to 30 cm. There will also be adequate space for men to pass in safety on decking whenever materials are placed on top.

Guard rails, mid rails and toe boards will be fitted at edges of decking to prevent men from falling off. Guard rails will be about 106 cm in height and toe boards not less than 15 cm in height. Both will be securely fixed to the inside of standards.

Ladders will be provided up to 3 steps over the decking and will be secured properly to the scaffolds.

All scaffolds will be inspected regularly to make sure that stability is not affected and a "Not to be used" notice will be placed on scaffolding not meeting this requirement.

17. CRANES AND LIFTING EQUIPMENT.

All lifting appliances and every part thereof, including all working gear and all other plant or equipment for anchoring or fixing will be of good mechanical construction, sound material, adequate strength and free from patent defects and properly inspected and maintained. Attachment "8" includes checklist items and lift plan for cranes.

All chains, hooks, shackles, slings, and other equipment used for lifting application will be of client approved type and maintained in good condition. All hooks will be with safety latch and all slings will have the SWL marked on it. All mobile heavy equipment and crane operators will have a valid UAE license to operate such equipment. All cranes and lifting equipment will be inspected before deployment.

All cranes and items of equipment used for lifting and rigging will be in good condition and suitable for the work they are required to do. Outrigger pads will be used at all times. All critical crane lifts will be submitted to client for approval.

Cranes will be used for unloading and installation of Water tanks, shelters, pumps, and other heavy equipment.

Class "A" hazard exists with the use of cranes and equipment. For this, all crane operators will have valid UAE licenses, SWL will be marked on equipment and lifting tackles, the crane will be operated only on firm level standing with outrigger pads in place. The crane operator will act on the signals of one man only. The operator will

not leave the crane with load suspended. Damaged hooks, rings, eye bolts, slings, etc. will not be used.

Cranes and heavy equipment will not operate under electrical power lines without client's approval, per the client Construction Safety Manual.

The operator will use the following checklist before any lift will be done. He will :-

- Check that all protective guards and panels are secure before operating.
- Check all hydraulic hoses for chafing, bulging, leaks, or other damage.
- Visually inspect all gear cases for leakage or damage. If leakage is evident, fill the case to the proper level before operating.
- Check all controls for correctness and ease of operation.
- Check tire pressures and wheel studs. Tire wear can be greatly reduced and stability of the machine increase by matching tires carefully for size and degree of wear. Maintain proper inflation at all times.
- Check brake air pressure.
- Check low air pressure warning devices
- Check foot brake operation
- Check headlights, clearance lights, turn signals, parking lights, tail and stop lights, windshield wipers, horn, etc.
- Check all instrument panel gauges
- Visually inspect the entire machine for loose or missing bolts, or cuter pins, cracked welds, frayed or damaged ropes, dented or damaged boom chords or lattice.
- Visually inspect all clutch and brake linings for evidence of wear, or grease and oil on the linings. Serious injury to ground personnel or damage to property and equipment could result if adjustments are neglected.
- Read the maintenance section of the manufacturer's manual. Knowledge of protective maintenance may allow the operator to spot a malfunction in the machine before an accident occurs.

18. MECHANICAL EQUIPMENT.

All mechanical equipment will be of client approved type, maintained in good working condition. All moving parts of any equipment will be provided with safety guards.

Equipment will be adequate and suitable for the work to be done.

Mechanical equipment like compressors will be used at site for jack hammer operations while dump trucks, loaders will be used for loading and transporting marl, sand, gravel, etc.



Class “A” hazard exists with the use of mechanical equipment. For this, equipment will be used only by those who are experienced in the use of such equipment. This will be monitored by checking their licenses. All moving parts will be securely guarded. Bulldozer blades, scraper aprons and tipper bodies will always be lowered after each use.

Heavy equipment, dump truck, loaders, etc. will be equipped with back-up alarms systems and/or will have an assistant (back-up spotter) to maneuvering and to warn the operator of unseen hazards. Passengers will not be carried on any equipment.

Only trained personnel will operate any mechanical equipment. Operators will be trained in the procedures and functions relevant to a specific piece of equipment; they must be fully aware of the capabilities and limitations of the machine and have knowledge of the day-to-day maintenance that it requires.

All operators of mobile heavy equipment must be in possession of a UAE license for that particular class of machinery.

Dump Trucks.

Dump trucks will be extensively used for this project. It is essential that they be properly maintained. The latch on dump skips must be in good working order, and the release mechanism should function smoothly. Dump trucks are not designed to carry passengers. It will be strictly forbidden for employees to ride in the skip or on the engine cover. When repairs or maintenance are being carried out on a hydraulically operated dump truck, the dump body should be fully lowered.

Graders, Bulldozers, Scrapers, and Loaders.

Heavy earth moving equipment only allows the operator a limited view of the immediate area. It is, therefore, essential that a banksman be appointed to warn the operator of hazards that cannot be seen from the operator’s position.

This equipment will be equipped with rollover protection. A valid UAE heavy equipment license is required for each operator for such equipment.

Before moving his machine, the driver must walk around it to see that the area is clear.

Men must not be allowed to sit or lie in the area around the machine.

The engine will not be left running when the driver is not at the controls. Before leaving his machine, a driver must shut off the engine and remove the ignition key.

Blades, scraper bowls, etc. must be lowered to the ground before the driver leaves his unit. The wheels should be properly chocked. Before any work can be done underneath, such hydraulic equipment must be first blocked to prevent accidental movement.

Excavators.

Excavations are carried out using very specialized equipment, which falls into two categories: (1) fixed position machines, and (2) moving machines. The choice of equipment to be used is determined by the size of the project, topography, volume of earth to be hauled out and many other factors. Fixed position machines include, but are not limited to, face shovels, backhoes, draglines and grabs. The fixed excavator loosens the soil and loads from a stationary position. They are useful to perform specific excavation tasks at a single location. Their loss of mobility is compensated by the fact that greater force can be applied at the excavation face. Moving machines include, but are not limited to, bulldozers, loaders, scrapers, graders and trenching machines. They remove, transport and deposit excavated material all in one cycle of operation. They are used in applications where large volumes of earth need to be moved over uneven ground. In this process, they also help to level the ground over which they operate.

Outriggers must be fully extended when operating a mechanical excavator so fitted. An attendant must be appointed and be available at all times during excavation to assist and guide the operator. Excavators with a swinging motion must have a clearance of at least 0.6 meters from any fixed object. Booms on excavators must be latched before travel.

Generators.

A competent electrician will be available to ensure that electrical connections are properly made. The operator should be responsible only for the mechanical function of the machine.

All pulleys, belts, and fans must be totally enclosed or otherwise guarded.

The side panels to the engine cover are designed to give access to the machinery for maintenance or repair. They must be closed at all times when the engine is running.

The machine must be properly grounded before each use.

The following is a typical checklist of the major items to look for in preventing a fire hazard:

- Repair all fuel leaks
- Check hose and pipe connections for wear and cracks
- Clean up all combustible trash around the generator
- Clean up all fuel spills and place clean sand around areas when required.
- Sheds constructed of combustible materials placed around generators and wooden base frames are prohibited.
- Exhaust piping system will be kept away from work areas and combustible materials.



- Generator sets will be located at least 50 feet from buildings or materials that may catch fire.
- Inspect all wiring for damage or improper splices/repairs.
- Electrically ground all generator sets
- Fire extinguishers must be readily accessible. One CO₂ extinguisher for the generator and a dry chemical extinguisher for the engine drive are recommended.
- Conduct daily inspections of all generator sets.

19. TRANSPORTATION AND TRAFFIC CONTROL.

Employees traveling to and from work site will travel only in vehicles provided with client approved seats. Seat belts will be provided on all the vehicles for all the passengers except for buses where seat belt will be provided only for drivers.

Safe transportation of men and material, at the least accident-rate and maximum protection to the people and property.

Class “A” hazard exists with transportation. For this all the drivers will have a UAE license and they will obey traffic rules. The drivers will be advised on the use of defensive driving on the right of way and around construction sites. The vehicles will be checked regularly for steering system, brakes, tires, seat belts, horn, lighting and signal system, rear view mirror, windshield wipers, crank case, radiator level, exhaust system, gas tank cap and the free unobstructed and easy operation of emergency door.

The drivers and passengers will be given advice on actions to be taken on emergencies, on an accident, etc.

Operational speed limits for moving equipment will be kept at 40 km/hr. on construction sites and at posted speeds elsewhere.

20. INJURY AND DAMAGE REPORTING.

In the event that an accident or other safety infringement incident were to happen during the course of implementing the work, an immediate oral report, followed by a written report within 24 hours must be filed with the Project Manager and the Safety Officer by the individual whose area of responsibility the accident/incident occurred. Within 48 hours of receipt of the accident report, the Project Manager, assisted by the Safety Supervisor, will carry out an independent investigation to verify the findings. The Project Manager will review the accident report, findings, and corrective action to ensure that similar events are preventable in the future and that all personnel on the staff are appraised of the outcome to increase everyone’s safety awareness.



All accidents that result in any property damage, fatal injury, injury requiring hospitalization or otherwise serious personal injury, and all fires will be fully investigated. Contractual requirements and legal requirement under UAE Labor Law make it mandatory that any injury which renders an employee unfit for work for more than three (3) days must be reported.

Records of all accidents and incidents that have been investigated, will be prepared on a preliminary accident form similar to that included in Attachment "9" followed within three days by a more detailed report, and which will be maintained in the Project Manager and Safety Supervisor's offices. The Safety Supervisor will be responsible for notifying UAE Labor Office of any accident as mentioned above.

21. EXCAVATIONS.

All excavations will be made in accordance with contract requirements.

- Whenever there is likelihood of a collapse of the side of an excavation, the sides will be suitably shored or sloped to a safe angle.
- Materials will be placed on the edges of the excavation, sufficiently away at a minimum of 2 to 5 feet to prevent the danger of falling in.
- Suitable stop blocks will be used where vehicles or equipment may tip material into an excavation.
- Persons will not be permitted to work in any place where they could be struck by any part of mechanical equipment. Signs will be posted and barricades used to warn personnel to keep out.
- Tests will be conducted by loss prevention where there is reason to suspect presence of hazardous atmosphere in an excavation.

Class "B" hazard exists during excavations. The following precautions will be taken:

No mechanical excavation will be done at a place if there is a possibility of underground utilities.

Shoring or proper angle of repose will be provided, if there is a possibility of a collapse and the depth reaching such that the men working could be buried or trapped.

All excavations will be checked daily and specially after rain storms for the following:

- Shoring/trench box/sloping
- Water Egress
- Spoil clearance
- Barrier/warning signs/lights
- Access/egress (ladders)
- Cross-overs



- Void space procedures
- In Plant Areas
- Rescue equipment

22. FIRE PREVENTION.

Damage from fire can be the most destructive incident costly in terms of injury or loss of life materials, and schedule slippage. Grand Target and subcontractors will be especially instructed on how to prevent fires at the job sites. Adequate fire fighting equipment will be provided (dry chemical, CO₂, water barrels, etc. at each area where the work is underway, including temporary warehouses, storage yards, accommodations, mess halls, and recreational facilities.

For each work and living/eating area, a Class "A" hazard exists. Fire fighting appliances will be provided throughout and maintained in good condition. Fuel, oils and other combustible and flammable materials, will be stored separately at designated places as directed by the Safety Supervisor. Good housekeeping will be followed and personnel will be trained in the use of fire fighting equipment. Fire extinguishers will be adequately provided and arranged for easy access. Each construction vehicle will also be equipped with an operating fire extinguisher. The fire extinguishers will be inspected initially on first installation and then every 30 days. Inspection tag will be signed and dated by the Safety Supervisor designee. Fire extinguishers inspection form are included in Attachment "10".

23. Flammable Liquids.

Flammable liquids are those that can produce a flammable mixture in air at ambient temperature. In Saudi Aramco, this is defined as a fluid (liquid or gas) having a flash point of 55 °C (130 °F) or lower. Care in handling flammable fluids is of prime importance.

All flammable liquids will be kept in securely capped metal containers or steel drums on which the contents are clearly marked. Gasoline, acetone, spirits and other volatile liquids with flash points below 32 °C (90 °F) will be kept in strong metal lockers located in well-ventilated, non-combustible huts or sheds. Drums containing flammable fluids will be provided with proper bung vents. Flammable storage areas will be securely locked or fenced, posted with a warning sign "Danger Flammable Area" and will be located at least 15 meters away from the nearest building or storage area for combustibles. No other materials will be stored with flammable liquids.

Flammable gases in cylinders (acetylene, propane, etc.) will be segregated from other materials, preferably under an open, well-ventilated sunshade.



Oxidizing gases (oxygen, chlorine, nitrous oxide) will be store separately.

While handling, the following precautions will be observed:

- Transportation will always be in closed metal containers. Plastic containers are prohibited.
- Transfer operations will be carried out with funnels and there will be no open flames within 15 meters of the operation unless conditions warrant greater clearance.
- Containers are to be grounded and bonded during transfer operations.
- Screw tops and stoppers will be replaced immediately.
- Any metal container holding flammable liquid will be a FM or UL approved type of safety container.

Gasoline and diesel powered equipment will only be used in well-ventilated areas. Exhaust pipes will be kept away from combustibile materials. Engines will be stopped before refueling takes place.

Instructions will be posted in each building on procedure to follow in the event that a fire were to break out within the structure:

- On discovering a fire, sound the alarm, call the emergency team (fire department), and fight the fire with extinguishers or water hoses if safe to do so.
- Rouse the occupants in the building by any means available and try to ensure that all occupants have evacuated before leaving yourself.
- Go to the assembly area and wait further instructions; do not return to the building until the all clear is given.

The emergency team will shut off any electrical or gas supply lines and fight the fire until brought under control and extinguished, and give the all-clear signal.

The medical team will man the first-aid station, keep the ambulance ready on call, assist the emergency team with rescues and casualties, and treat any injured.

24. FORM WORK

All form work support will be of client approved type. The timber will be of suitable quality and strength. Prior to any concrete placement in to any supported formwork structure, approval will be obtained from client representative.

Class “B” hazard with respect to fabrication of formwork. Form work will be designed, erected, supported, braced and maintained so that it will safely support all vertical and lateral loads that may be imposed upon it during placement of concrete.

Stripped form will be removed and stock piled promptly after removing all protruding nails, wire ties, etc.

Wood will be stacked separately in the lay down area, away from any combustible materials. For a long duration of storage will be protected from elements.

Formwork will be fabricated for both in-situ and pre-cast concrete.

Work platforms will be provided for workmen for all forms six feet and above formation level.

25. ABRASIVE SAND BLASTING & PAINTING.

This operation requires an approved HIP prior to commencement of the works.

In all sand blasting operations, the operator and surrounding workers shall be instructed to use the following protective equipment:

- | | | | | |
|-----|-----------------------|----------|---|--|
| i) | <u>Indoor</u>
and | Operator | : | Hood, airline coveralls, leather gloves
&
ear protection. |
| | | Workmen | | |
| ii) | <u>Outdoor</u>
ear | Operator | : | Hood airline coveralls leather gloves and
protection. |
| | | Workmen | : | Respiratory face shield, safety goggles
coveralls and leather gloves. |

The hood airline shall meet the project specifications and must have grade "D" breathing air standard and shall deliver 6 SCFM (Standard Cubic Feet/Minute) continuous flow. The breathing air compressor shall meet the standards and have the following:

- i) Pressure relief valve
- ii) High temperature alarm
- iii) Periodic carbon monoxide (CO) tests
- iv) Air quality test to ensure grade "D" limit in air line to the respiratory

The sand blaster components shall have a dead man switch, all sand blaster components and work surface shall be electrically bonded to the compressor and the compressor grounded to a permanent grounding. Barricades and warning signs shall surround the work place to the respiratory hazard limit. The waste sand shall be disposed of in a manner approved by client.

26. FIRST-AID FACILITIES.

The UAE Labor and workmen Law stipulate the requirements for protection of employees and the rendering of first aid.

The first-aid supply cabinets will be equipped with all the bandages, medicines and disinfectants listed on Attachment "11".

At each work sites, a posted notice will indicate the following information:

- Name of the person who is in charge of the first-aid cabinet.
- The hospital to which any injured person that requires hospital treatment is to be sent.
- Telephone number of the nurse of first-aid attendant employed by Al-Osais.
- Emergency telephone number to be called for assistance.

A map showing directions to the nearest hospital selected for treatment of injuries will be posted outside the clinic and a copy will be maintained in the ambulance.

Medical Evacuation Procedures:

In the event of major accident or a serious sickness to any of the employees on site, requiring emergency evacuation, the following procedure will be followed:

For the immediate evacuation of injured or sick person, the ambulance would be called. This vehicle will always be kept in a top maintenance and fueled condition with a driver assigned on a full-time basis.

Using the name and address, telephone number, and other pertinent information available at postings and on the emergency cards carried by each employee, the driver will transport the incapacitated employee to the nearest clinic or hospital, driving as fast and carefully as the roads and other conditions permit.

If neither facility is practical from a driving distance, nor deemed by the nurse not to be equipped with the required emergency treatment, attempts will be made to acquire client permission for an aviation medical evacuation.

27. DUST CONTROL

Water trucks equipped with hoses and sprinklers will be used in dampening camp streets and roads and work areas during the dry season.

Strict implementation of speed limit within the camp will be observed to help control dust.



28. JOB SITE INSPECTIONS.

Job site inspections will be conducted at least daily and an inspection check list submitted to Client weekly as part of the weekly site meeting minutes.

29. GENERAL SAFETY RULES.

All employees will comply fully with all laws, orders, citations, rules, regulations, standards and statutes with respect to occupational health and safety, accident prevention, safety equipment and practices prescribed by UAE Law, Client requirements and Grand Target safety requirements

To help maintain job safety, security and the well being of employees, the use of mobile and hand-held radios facilities these functions. In this regard, it is important that the radio communications be employed properly and that the user be familiar with the radio jargon/phrases and protection of the equipment. Attachment "12" offers some guidance on the use of radios.

Stress will be made on proper housekeeping, training, lectures and discussions held each week at the safety meetings.

It is recognized that the construction work will be accomplished under high temperature and humidity conditions with frequent sandstorms, to create a harsh working environment.

The following guidelines will be followed when working under these field conditions:

- Whenever possible, avoid working during hottest part of the day. Start work as early as possible. Work at night if proper lighting is available.
- Provide cool drinking water for all personnel.
- Supervisors should constantly check for signs of heat exhaustion. Any personnel suffering from preliminary stages of heat exhaustion (headache, excessive perspiration) should be immediately moved to a cool, shaded area.
- All personnel should be trained to recognize symptoms of heat exhaustion in themselves and others. They should be constantly encouraged to drink as much water as possible.
- The cooling systems of all vehicles should be checked daily for proper fluid level and airflow obstructions. Fan belts should be checked for wear and proper tension.
- Batteries should be checked weekly for proper fluid level; add distilled water as required.
- Vehicles in isolated areas should have spare fan belts, tires, and water hoses. Vehicles should carry adequate water for all occupants for at least one full day.
- Gloves should be provided for handling tools and equipment exposed to direct sunlight.



- All generators and other equipment should have adequate ventilation for proper cooling. No equipment should be operated in a confined space.
- A cooled container must be provided for storage and transportation of temperature-sensitive materials and equipment.

If the vehicle breaks down or becomes stuck in soft sand or mud, the rule is to **REMAIN WITH THE VEHICLE**. Each employee will be instructed to initiate one or all of the following actions at that time:

- (a) Remain calm, do not panic, because the journey was first registered on the sign out log and the predicament will become evident after a short period of time.
- (b) Assess and ration the water supply.
- (c) In summer, prepare shelter alongside or underneath the vehicle where occupants can rest and remain cool.

30. HAZARDOUS MATERIAL AND WASTE MANAGEMENT.

There will be no major hazardous waste from this project. The only wastes expected are of used oils and parts from vehicles and equipment, engine coolants and dead batteries. Such items will be collected in proper containers and disposed of in client approved dumping areas.

Handlers of such materials will be warned to avoid skin contact, inhalation of vapors or fumes, and ingestion through eating and/or drinking.

The handling and disposal of waste will be done in accordance with client approved practices only. All chemicals and contaminated materials will be kept in sealed containers and during use and final disposal, will not be harmful to the environment.

Vehicles hauling waste products will be covered and sealed in such a way to prevent any materials from stewing off the trucks and causing unsafe, unsightly and unsanitary conditions.

31. SECURITY PROCEDURES.

A safe and secure plan will be implemented upon start mobilization. Assigned security men by Grand Target will be in charge of security at all times and one additional guard will be on duty during night shift to secure the site.

Proper logging will be made for all incoming and outgoing men and materials. Regular workers will have valid ID cards at all times while they are at work and visitors will have visitors pass to enter the area. Material receipt forms and delivery log book will be available for the incoming and outgoing materials. All tool boxes and



high value equipment will be secured after working hours. All the incoming and outgoing men and vehicles will be logged in. All vehicles will be checked when coming and going.

The logging system will include all the activities of the area, such as the change of shift, any movement of men and materials and any unusual incident that happened.

Visitors' entry will be restricted and will be allowed only with the proper authorization of a responsible person.

The lay down area, camps and offices will be properly fenced to prevent unauthorized entry to and from site. The number of guards will be suitably amended depending on the requirement.

Proper lighting will be installed at work sites, lay down yards and camp areas to illuminate the night and afford easy visual observation.

No cooking or open fires will be allowed in the work, maintenance and living areas. All equipment operators and drivers will have valid UAE licenses and all equipment and vehicles will be fitted with valid decals.



LIST OF ATTACHMENTS

- Attachment 1 - Grand Target Safety Procedures**
- Attachment 2 - Organization Chart**
- Attachment 3 - Resume of Safety Officer**
- Attachment 4 - Hazard Identification Plan**
- Attachment 5 - Safety Inspection Check list**
- Attachment 6 - Safety reports and Records**
- Attachment 7 - Typical Work Permit**
- Attachment 8 - Crane Operating Checklist and Lifting Plan**
- Attachment 9 - Preliminary Accident Report**
- Attachment 10 - Fire Extinguisher inspection log**
- Attachment 11 - Work site First aid cabinet contents**
- Attachment 12 - Radio Communication**

All the above attachments will be submitted to client for approval before starting the activities at site



TABLE OF CONTENTS

SECTION 1: QUALITY POLICY

SECTION 2: INTRODUCTION

- 2.1 Scope of QA /QC Plan
- 2.2 2.2 Scope of Work
- 2.3 Terms and Definitions

SECTION 3: MANAGEMENT RESPONSIBILITY

- 3.1 Management Commitment
- 3.3 Management Review
- 3.3 Resource Management
- 3.4 Organization
- 3.5 Numbers and Performance of The Quality Personnel
- 3.6 Testing Agency

SECTION 4: Quality System

- 4.1 Scope
- 4.2 General Requirements
- 4.3 Description
- 4.4 Quality System Planning / Requirements
- 4.5 Supplier and Sub Contractor's Quality System
- 4.6 Contract Review
- 4.7 Document and Data Control
- 4.8 Project Inspection and Data Control
- 4.9 Purchasing
- 4.10 Handling, Storage, Packaging, Preservation and Delivery
- 4.11 Control of Customer Supplied Product
- 4.12 Product Identification and Traceability
- 4.13 Process Control and Special Process
- 4.14 Inspection and Testing
- 4.15 Control of Inspection, Measuring and Testing Equipment.
- 4.16 Inspection and Test Status.
- 4.17 Control of Non Conforming Product.
- 4.18 Corrective and Preventive Action
- 4.19 Internal Quality Audits
- 4.20 Training
- 4.21 Statistical Techniques



SECTION 5: DESIGN

- 5.1 Design and Development Planning
- 5.2 Design and Development Inputs
- 5.3 Design and Development Outputs
- 5.4 Design and Development Review
- 5.5 Design verification
- 5.6 Design Validation
- 5.7 Design Changes

SECTION 6: SAFETY AND LOSS PREVENTION

SECTION 7: ORGANIZATION CHART

SECTION 8: STANDARD PRACTICE INSTRUCTIONS

SECTION 9: LIST OF METHOD STATEMENTS, ITPs AND CHECKLISTS



1.0

QUALITY POLICY

The primary objective of Grand Target Technical Services is to provide top class products and services, ensuring customer satisfaction by the effective implementation of our quality system.

Grand Target Technical Services is committed to continual improvement by internal review and assessment of our Quality System for efficiency and suitability. Grand Target Technical Services have strong communication within our company and with our customer needs.

Our major construction activities include, but not limited to Procurement, Fabrication, Erection/ Installation/Execution, Finishing, Testing and Commissioning. The nature of our business places particular emphasis on Safety, Quality, Price, Delivery, Reliability, Experience and Training.

Grand Target Technical Services shall strive for quality and assurance to continue building a reputation and trust our customers can depend upon.

General Manager

2.0 INTRODUCTION

2.1 Scope of the QA / QC Plan.

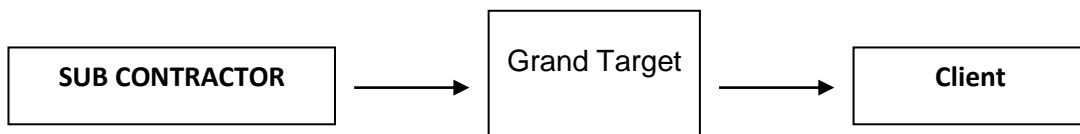
To demonstrate its ability to provide product that meets the required standards and specifications, ensuring customer satisfaction through effective implementation of the Quality System.

2.2 Scope Of Work

As per the contract agreement

2.3 Terms and Definitions

The following terms used in this QA/QC Plan are detailed below in the supply chain.



The term "Product" applies to the product intended for, or required by the customer.

The term "Quality System" refers to the QA/QC Plan, I.T.P's, QP's, QR's, S.P.I's.

QA/QC Plan - Quality Assurance/Quality Control Plan

I.T.P's - Inspection and Test Plans

QP's - Quality Procedures

QR's - Quality Records

S.P.I's - Standard Practice Instructions

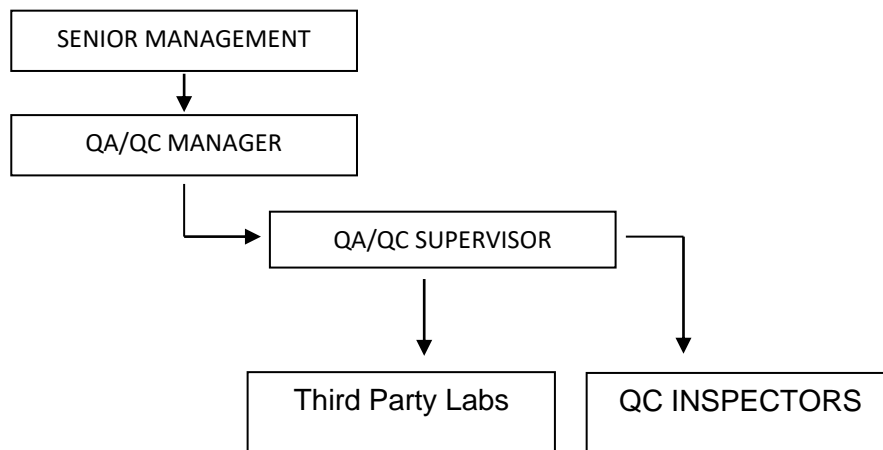
3.0 MANAGEMENT RESPONSIBILITY

3.1 Management Commitment

Grant Target Top Management is committed to development and contribution for the implementation of Quality System and improving its effectiveness by:-

- (a) Communicating to the organization the importance of meeting customer as well as statutory and regulatory requirements.
- (b) Establishing the Quality Policy.
- (c) Ensuring that Quality Objectives are established.
- (d) Conducting Management Reviews (See Section 3.2).
- (e) Ensuring the availability of resources.
- (f) Establishing Quality Management chain of command.
- (g) Ensuring construction / installation is carried out in accordance with the approved procedures, drawings and specifications. Management shall monitor procurement process, manpower resources, inspection and all other work related items included in the contract.

Chain of Command



3.2 Management Review

Senior management shall review the quality system on a regular basis to ensure that the system is suitable and effective. Senior management reviews shall be scheduled events conducted every six (6) months and shall make a representation of the results of recommended actions of such reviews to the company representative within three weeks after the scheduled review date. Changes to the quality system that result from senior management reviews shall be incorporated in the QA/QC Plan with the approval of the QA/QC Manager.

3.3 Resource Management

Grand Target shall determine and provide the resources needed

- (a) To implement and maintain the quality system and continually improve its effectiveness and
- (b) To enhance customer satisfaction by meeting customer requirements.
- (c) Human Resources shall be qualified, trained and experienced to follow the Quality system.

3.4 Organization

Organization Chart for the construction phase is attached for reference (at end of section). It shows principal disciplines and functions, job titles and current names of key personnel. This phase also covers QA/QC activities in the fabrication/ construction of the facilities.

Grand Target shall perform all QA/QC functions to ascertain that all fabrication, construction and pre-commissioning are performed in accordance with the following requirements:

- a. Approved fabrication & construction drawings.
- b. Project specification & Standards
- c. "Approved for Construction" fabrication procedures and specifications.
- d. Grand Target's approved QA/QC Plan

General Manager (GM)

Based in head office to monitor & support all contract related items, technically and financially.

Project Manager (PM)

The PM shall be in complete charge of the project and directly responsible to Grand Target Management. He shall be responsible for assuring compliance of the approved QA/QC plan for all construction Inspection and Testing activities both off and on site. He shall be responsible for the Project Construction and Supervision of the work and assuring availability of adequate tools, equipment, manpower and qualified site personnel. He shall monitor

procurement, receipt and storage of all materials and have close communication with the QA / QC Manager for Inspection related activities.

Quality Assurance / Quality Control Manager (QA / QC Manager)

QA/QC Manager shall report directly to the GM and has an interface with the PM for Coordination. His primary functions are to develop, coordinate, obtain approval and implementation of the Quality System as per project requirements.

He shall ensure the inspection requirements are implemented and maintained. He shall review, evaluate and audit the effectiveness of the quality system and verify compliance of work to the contract requirements. Duties also include monitoring non-conformances and developing and modifying procedures for continual improvement.

The QA/QC Manager shall monitor weekly and monthly Quality related submittals and review of Purchase Orders to ensure all the Quality requirements are addressed.

Quality Assurance / Quality Control Supervisor (QA / QC Supervisor)

QA/QC Supervisor shall report directly to the QA/QC Manager. His primary functions are to coordinate all on-site and off site inspections. He shall ensure QC Inspectors follow the Inspection and Test Plans and requests for Inspections are raised as per the required intervention points. He shall ensure a comprehensive filing system is maintained and compile all quality documentation up until mechanical completion.

Quality Control Inspector (QC Inspector)

The QC Inspector shall report directly to the QA/QC Supervisor. A separate QC inspector shall be assigned to each discipline. E.g Civil, Mechanical and Electrical.

QC Inspector shall conduct all the Inspection and Testing activities in accordance with approved Inspection and Test Plans. Each QC Inspector shall raise the Request for Inspection to client and inform the QA / QC Supervisor of dates and times. He shall coordinate with the stores for receiving inspection and material storage. He shall complete all inspection records and forward them to the QA /QC Supervisor.

Construction Manager (CM)

CM shall report directly to the PM. He controls and coordinates all construction activities as per the PM instructions. He instructs each discipline project engineer to ensure work activities are in accordance to with the approved schedule.

Engineering Manager.(Eng. M)

Eng. Manager shall be based in head office reporting to the PM. He shall give support and clarification on technical matters and contract engineering queries.

Procurement Manager

He shall be linked with engineering reporting to the PM. He shall be responsible for procurement of materials and any other items related to the contract. He shall give good communication with the QA / QC Manager for reviewing of purchase orders and supporting documents required for pre-inspection meetings.

Administration Manager

He shall report directly to the PM and shall be responsible for support services and related accounts.

Quantity Surveyor

He shall report to the PM, shall be responsible for material Take Off's and contract changes.

Safety Manager

He shall report to the GM and have direct contact with the PM. He shall ensure safe work practices on construction site. He shall be responsible for reviewing and assessing Accident reports and ensuring compliance with the Safety Manual and Procedure.

3.5 Numbers and Performance of the Quality Personnel

Grand Target shall provide more Quality Control Inspectors when the assigned Inspectors were found to be not sufficient to do all the required inspection and testing and shall conform to the project requirement.

Grand Target will replace any of the quality control personnel when his performance found to be unsatisfactory.

Client's evaluation with regard to the quality control personnel numbers and performance will be considered.

3.6 Testing Agency

Grand Target shall subcontract a client approved third party testing agency to do independent testing of soil, concrete and asphalt paving works. The test shall be conducted to applicable specified standards as described in the contract documents and shall include but not limited to the following.

- a. Soil Density Test.
- b. Concrete Compressive Strength Test.
- c. Concrete Air content Test.
- d. Concrete Water Quality Test.
- e. Concrete Aggregate Test.
- f. Each phase of Earthworks, Concrete and asphalt works shall be tested by such agency to ensure the compliance with contract specifications.

4.0 QUALITY SYSTEM (QS)

4.1 Scope

The scope of QS is to demonstrate control for the Quality requirements related to the procurement, document control, design, inspection and testing, quality records, drawings and materials.

4.2 General Requirements

The Quality System is broken down into the following categories:-

- a) QA /QC Plan
- b) Standard Practice Instructions (S P I's)
- c) Method statements
- d) Inspection and Test Plans (I T P's)
- e) Quality Records (Q R's)

4.3 Description

a) QA/QC Plan

Is the overall project Specific Quality Plan to be followed and used for the implementation of the quality system in accordance with Contract documents, Standards and based on ISO 9001:2008 requirements.

b) Standard Practice Instructions (S.P.I's)

Detailed procedures to demonstrate control of work process and special processes.

c) Method statements

Detailed procedures for each Discipline E.g. Civil, Mechanical and Electrical to support the activities detailed on the I.T.P's and to ensure methods are tests are carried out in accordance with Project specifications and contract requirements.

d) Inspection and Test Plans (ITP's)

The master document that controls in sequence all Inspection and Testing Requirements for all disciplines and identifies intervention points for Requests for Inspections (RFI's) to be raised to client.

ITP's have been prepared in accordance with Project specifications and standards.

e) Quality Records

Quality Records are the verifying documents and test records as indicated on the ITP's.

Note: Sections d, and e make up the quality inspection documentation's for site works.
(See section 4.8 Project Inspection Record Books).

4.4 Quality System Planning / Procedures

The Quality System planning is carried out in order to ensure procedures are generated to cover all aspects of the works and identify the process needed for the Quality System and the application throughout Grand Target

4.5 Supplier and Sub contractor's Quality System.

Grand Target shall evaluate and pre-qualify all sub contractors and submit the pre qualification documents to client for approval before finalizing the work order to the sub contractor.

4.6 Contract Review

The Contract review meeting shall be held internally after award of contract. Top management shall ensure that client requirements are determined and are met with the aim of enhancing customer satisfaction.

Any results shall be documented and sent via transmittal to the relevant department for review and discussion.

4.7 Document and Data Control

Document and data control shall be carried out in accordance with Standard Practice Instruction Ref. No. **SPI / EP / DDC / 001**.

Drawing Distribution List

The Engineering Department Document Controller shall maintain a filed drawing distribution, establishing the normal distribution drawing in compliance with contract documents

The record listing shall indicate the number of copies of each drawing to be provided to the QA/QC Department, the filed supervision of each discipline etc.

The Engineering Department Head shall review and/or revise as sign the distribution list.

4.8 Project Inspection and Records

To gather the information necessary to complete the project Inspection & Records Standard Practice Inspection Ref:No. **SPI / EP /PIRB / 001** shall be followed, based on the requirement of contract documents

4.9 Purchasing

Purchasing shall be in accordance with Standard Practice Instruction Ref.No. **SPI / EP / P / 001** and the requirements of contract documents.

4.10 Handling, Storage, Packaging, Preservation and Delivery

Handling, Storage, Packaging, Preservation and Delivery shall conform to Standard Practice Instruction Ref.No. **SPI / EP / HSPPD / 001** and the requirements of contract.

4.11 Control of Customer Supplied Product

Control of Customer Supplied Product shall conform to Standard Practice Instruction Ref.No. **SPI / EP / COCSP / 001** and the requirements of contract.

4.12 Product Identification and Traceability

Product Identification and Traceability shall conform to Standard Practice Instruction Ref.No. **SPI / EP / PIT / 001** and the requirements of contract.

4.13 Process Control and Special Processes

Process Control and Special Processes shall conform to Standard Practice Instruction Ref.No. **SPI / EP / PC-SP / 001** and the requirements of contract.

4.14 Inspection and Testing

Inspection and Testing shall be in accordance with Standard Practice Instruction Ref: No.**SPI / EP / IT / 001** and the requirements of contract.

4.15 Control of Inspection, Measuring, and Test Equipment

Control of Inspection, Measuring and Test Equipment shall be in accordance with Standard Practice Instruction Ref: No.**SPI / EP / COIMTE / 001** and the requirements of contract.

4.16 Inspection and Test Status

Inspection and Test Status shall be in accordance with Standard Practice Instruction Ref: No. **SPI / EP / ITS / 001** and the requirements of contract.

4.17 Control of Non Conforming Product

Control of Non Conforming Product shall be in accordance with Standard Practice Instruction Ref: No. **SPI / EP / CONCP / 001** and the requirements of contract.

4.18 Corrective and Preventive Action

Corrective and Preventive Action shall be in accordance with Standard Practice Instruction Ref: No. SPI / EP / CAPA / 001 and the requirements of contract.

4.19 Internal Quality Audits

Internal Quality Audits shall be in accordance with Standard Practice Instruction Ref: No. SPI / EP / IQA / 001 and the requirements of contract.

4.20 Training

Training shall be in accordance with Standard Practice Instruction Ref: No. SPI / EP / T / 001 and the requirements of contract.

4.21 Statistical Techniques

Where appropriate, Grand Target shall establish procedures for identifying adequate Statistical Techniques for verifying the acceptability of process capability and product characteristics.

5.0 DESIGN

5.1 Design and Development Planning

Grand Target shall plan and control the design and development of product. During design and development planning Grand Target shall determine

- (a) The Design and Development stages
- (b) The Review , verification and validation that are appropriate to each design and development stage , and
- (c) The responsibilities and authorities for design and development

Note: All Design planning shall be forwarded to client for Information.

5.2 Design and Development Inputs

Inputs relating to the product requirements shall be determined and recorded. These inputs shall include:

- (a) Functional Performance requirements
- (b) Applicable statutory and regulatory requirements
- (c) Where applicable, information derived from previous similar designs, and
- (d) Other requirements essential for design and development.

Note: All Design and Developments Inputs are subject to client's approval.

5.3 Design Development Outputs

The outputs of design development shall be provided in a form that enables verification against the design and development input and shall be approved prior to release. Outputs shall:

- (a) Meet the input requirements for design and development
- (b) Provide appropriate information for purchasing, production and for service provision
- (c) Contain or reference product acceptance criteria
- (d) Specify the characteristics of the product that are essential for its safe and proper use

5.4 Design and Development Review

At suitable stages systematic review of design and development shall be performed in accordance with planned arrangement (See Paragraph 5.1)

- (a) To evaluate the ability of the results of design and development to meet requirements and
- (b) To identify any problems and propose necessary action

All reviews shall be documented and forwarded to Client

5.5 Design Verification

Verification shall be performed to ensure that the design and development outputs have met the design and development input requirement. Verification may include

- (a) Performing alternate calculations
- (b) Comparing the new design with a similar proven design , available and
- (c) Undertaking test and demonstrations and
- (d) Reviewing the design-state documents before release.

5.6 Design Validation

Design validation shall ensure that the resulting product is capable of meeting the requirements for the specified application or intended use. Where ever practicable, validation shall be completed prior to the delivery or implementation of the product.

5.7 Design Changes

Design and development changes require approval from client. The changes shall be reviewed, verified and validated as appropriate and approved by the client, before Implementation. The review of design and development changes shall include evaluation of the effect of the changes on constituent parts and product al ready delivered.



6.0 SAFETY AND LOSS PREVENTION

General safety standards shall be applied through out the construction phase of the project. Grand Target has a documented Health & Safety Manual, which shall be followed throughout the construction period.

The Project Manager of Grand Target shall be directly in charge to ensure that safety department is conducting inductions for all workers to achieve

- Work safety by being alert to site conditions.
- Always avoid unsafe acts and conditions
- To ensure that accident prevention becomes a second nature to their staff.
- Use of safety equipment.
- House keeping at workplace

In addition, Grand Target is preparing a complete package of safety signs that shall be installed in various locations at site. Emphasis shall be given to locations where workers meet for transportation or mess hall.



STANDARD PRACTICE INSTRUCTIONS

1	CONTRACT REVIEW	SPI/EP/CR/001
2	DESIGN CONTROL	SP/EP/DC/001
3	DOCUMENT AND DATA CONTROL	SPI/EP/DDC/001
4	PROJECT INSPECTION RECORD BOOKS	SPI/EP/PIRB/001
5	PROCUREMENT	SPI/EP/P/001
6	CONTROL OF CUSTOMER SUPPLIED PRODUCT	SPI/EP/COCSP/001
7	PRODUCT IDENTIFICATION & TRACEABILITY	SPI/EP/PIT/001
8	PROCESS CONTROL / SPECIAL PROCESS	SPI/EP/PC-SP/001
9	INSPECTION AND TESTING	SPI/EP/IT/001
10	CONTROL OF INSPECTION MEASURING & TEST EQUIPT.	SPI/EP/COIMTE/001
11	INSPECTION AND TEST STATUS	SPI/EP/ITS/001
12	CONTROL OF NON-CONFORMING PRODUCT	SPI/EP/CONCP/001
13	CORRECTIVE ACTION & PREVENTIVE ACTION	SPI/EP/CAPA/001
14	HANDLING,STORAGE,PACKING,PRESERVATION & DEL.	SPI/EP/HSPPD/001
15	INTERNAL QUALITY AUDITS	SPI/EP/IQA/001
16	TRAINING	SPI/EP/T/001



**METHOD STATEMENTS,
INSPECTION & TEST PLAN
AND
QUALITY RECORDS
For
CIVIL WORKS**

Detailed method statement including Inspection Test Plans and Record formats for all activities will be submitted to client for approval, before starting the work

REVISION	DESCRIPTION	DATE	PREP. BY:	CHECKED BY:	APPROVED BY:



TABLE OF CONTENTS

<u>CIVIL WORKS.</u>		
1.	Construction Request for Inspection	Form C-001
2.	QA/QC Inspection Non-Conformance Report	QNCR-01
3.	Method statements	CODE
3.1	Rough Grading	QP-C-02-04, Rev-0
3.2	Excavation and Backfilling	QP-C-02-05/06, Rev-0
3.3	Trenching	QP-C-02-07, Rev-0
3.4	Aggregate Base Course	QP-C-02-08, Rev-0
3.5	Termite Protection	QP-C-02-10, Rev-0
3.6	Asphalt Concrete Paving	QP-C-02-11, Rev-0
3.7	Concrete Sidewalks and Curbs	QP-C-02-12, Rev-0
3.8	Pavement Markings	QP-C-02-14, Rev-0
3.9	Traffic Signs	QP-C-02-15, Rev-0
3.10	Site Non-Electrical Utilities	QP-C-02-16, Rev-0
3.11	Irrigation System	QP-C-02-17, Rev-0
3.12	Chain-Link Fences and Gates	QP-C-02-18, Rev-0
3.13	Guard Post / Bollards	QP-C-02-19, Rev-0
3.14	Landscaping	QP-C-02-20, Rev-0
3.15	Concrete Works	QP-C-03-01-05, Rev-0
3.16	Precast Concrete	QP-C-03-06, Rev-0
3.17	Grout	QP-C-03-07, Rev-0



3.20	Mortar and Masonry Grout / Reinforced Unit Masonry System.	QP-C-04-01/02, Rev-0
3.21	Structural Steel	QP-C-05-01, Rev-0
3.22	Steel Floor and Roof Deck	QP-C-05-02, Rev-0
3.23	Miscellaneous Metals	QP-C-05-03, Rev-0
3.24	Steel Handrails and Railings	QP-C-05-04, Rev-0
3.25	Gratings	QP-C-05-05, Rev-0
3.26	Expansion Control	QP-C-05-07, Rev-0
3.27	Finish Carpentry / Counter Tops	QP-C-06-01/02, Rev-0
3.28	Bituminous Damp Proofing	QP-C-07-01, Rev-0
3.29	Building Insulation	QP-C-07-02, Rev-0
3.30	Roof and Deck Insulation	QP-C-07-03, Rev-0
3.31	Sprayed Fire Proofing	QP-C-07-04, Rev-0
3.32	Roofing System	QP-C-07-05, Rev-0
3.33	Sheet Metal Flashing and Trim	QP-C-07-06, Rev-0
3.34	Sealants and Caulking	QP-C-07-07, Rev-0
3.35	Doors and Windows	QP-C-08-01-08, Rev-0
3.36	Door Hardware	QP-C-08-09, Rev-0
3.37	Glazing	QP-C-08-10, Rev-0
3.38	Metal Stud Framing System / Board System and Ceiling	QP-C-09-01/03/06, Rev-0
3.39	Portland Cement Plaster	QP-C-09-02, Rev-0
3.40	Tile Work	QP-C-09-04, Rev-0
3.41	Stone Work	QP-C-09-05, Rev-0
3.42	Resilient Tile Flooring and Base	QP-C-09-07, Rev-0
3.43	Carpet Tiles	QP-C-09-08, Rev-0



3.44	Painting	QP-C-09-09, Rev-0
3.45	Suspended Metal Ceiling Panels	QP-C-09-10, Rev-0
3.46	Access Flooring	QP-C-10-02, Rev-0
3.47	Signage	QP-C-10-03, Rev-0
3.48	Hammam Accessories	QP-C-10-04, Rev-0
3.49	Dock Bumpers	QP-C-11-04, Rev-0
3.50	Concrete Batch Plant	QP-C-BP-01, Rev-0
4.	Inspection & Test Plan.	
4.1	Rough Grading	ITP-C-02-04, Rev-0
4.2	Excavation and Backfilling	ITP-C-0205/06, Rev-0
4.3	Trenching	ITP-C-02-07, Rev-0
4.4	Aggregate Base Course	ITP-C-02-08, Rev-0
4.5	Termite Protection	ITP-C-02-10, Rev-0
4.6	Asphalt Concrete Paving	ITP-C-02-11, Rev-0
4.7	Concrete Sidewalks and Curbs	ITP-C-02-12, Rev-0
4.8	Pavement Markings	ITP-C-02-14, Rev-0
4.9	Traffic Signs	ITP-C-02-15, Rev-0
4.10	Site Non-Electrical Utilities	ITP-C-02-16, Rev-0
4.11	Irrigation System	ITP-C-02-17, Rev-0
4.12	Chain-Link Fences and Gates	ITP-C-02-18, Rev-0
4.13	Guard Post / Bollards	ITP-C-02-19, Rev-0
4.14	Landscaping	ITP-C-02-20, Rev-0
4.15	Concrete Works	ITP-C-03-01-05, Rev-0
4.16	Precast Concrete	ITP-C-03-06, Rev-0
4.17	Grout	ITP-C-03-07, Rev-0



4.18	Mortar and Masonry Grout / Reinforced Unit Masonry System.	ITP-C-04-01/02, Rev-0
4.19	Structural Steel	ITP-C-05-01, Rev-0
4.20	Steel Floor and Roof Deck	ITP-C-05-02, Rev-0
4.21	Miscellaneous Metals	ITP-C-05-03, Rev-0
4.22	Steel Handrails and Railings	ITP-C-05-04, Rev-0
4.23	Gratings	ITP-C-05-05, Rev-0
4.24	Not Used	ITP-C-05-06, Rev-0
4.25	Expansion Control	ITP-C-05-07, Rev-0
4.26	Finish Carpentry / Counter Tops	ITP-C-06-01/02, Rev-0
4.27	Bituminous Damp Proofing	ITP-C-07-01, Rev-0
4.28	Building Insulation	ITP-C-07-02, Rev-0
4.29	Roof and Deck Insulation	ITP-C-07-03, Rev-0
4.30	Sprayed Fire Proofing	ITP-C-07-04, Rev-0
4.31	Roofing System	ITP-C-07-05, Rev-0
4.32	Sheet Metal Flashing and Trim	ITP-C-07-06, Rev-0
4.33	Sealants and Caulking	ITP-C-07-07, Rev-0
4.34	Doors and Windows	ITP-C-08-01-08, Rev-0
4.35	Door Hardware	ITP-C-08-09, Rev-0
4.36	Glazing	ITP-C-08-10, Rev-0
4.37	Metal Stud Framing System / Board System and Ceiling	ITP-C-09-01/03/06, Rev-0
4.38	Portland Cement Plaster	ITP-C-09-02, Rev-0
4.39	Tile Work	ITP-C-09-04, Rev-0
4.40	Stone Work	ITP-C-09-05, Rev-0



4.41	Resilient Tile Flooring and Base	ITP-C-09-07, Rev-0
4.42	Carpet Tiles	ITP-C-09-08, Rev-0
4.43	Painting	ITP-C-09-09, Rev-0
4.44	Suspended Metal ceiling Panels	ITP-C-09-10, Rev-0
4.45	Solid Phenolic Toilet Compartments	ITP-C-10-01, Rev-0
4.46	Signage	ITP-C-10-03, Rev-0
4.47	Hamam Accessories	ITP-C-10-04, Rev-0
4.48	Dock Bumpers	ITP-C-11-04, Rev-0
4.49	Concrete Batch Plant	ITP-C-BP-01, Ref-0
5.	Quality Records.	
5.1	Rough Grading	QR-C-02-04, Rev-0
5.2	Excavation and Backfilling	QR-C-0205/06, Rev-0
5.3	Trenching	QR-C-02-07, Rev-0
5.4	Aggregate Base Course	QR-C-02-08, Rev-0
5.5	Termite Protection	QR-C-02-10, Rev-0
5.6	Asphalt Concrete Paving	QR-C-02-11, Rev-0
5.7	Concrete Sidewalks and Curbs	QR-C-02-12, Rev-0
5.8	Pavement Markings	QR-C-02-14, Rev-0
5.9	Traffic Signs	QR-C-02-15, Rev-0
5.10	Site Non-Electrical Utilities	QR-C-02-16, Rev-0
5.11	Irrigation System	QR-C-02-17, Rev-0
5.12	Chain-Link Fences and Gates	QR-C-02-18, Rev-0
5.13	Guard Post / Bollards	QR-C-02-19, Rev-0
5.14	Landscaping	QR-C-02-20, Rev-0



5.15	Concrete Works	QR-C-03-01-05, Rev-0
5.16	Precast Concrete	QR-C-03-06, Rev-0
5.17	Grout	QR-C-03-07, Rev-0
5.18	Mortar and Masonry Grout / Reinforced Unit Masonry System.	QR-C-04-01/02, Rev-0
5.19	Structural Steel	QR-C-05-01, Rev-0
5.20	Steel Floor and Roof Deck	QR-C-05-02, Rev-0
5.21	Miscellaneous Metals	QR-C-05-03, Rev-0
5.22	Steel Handrails and Railings	QR-C-05-04, Rev-0
5.23	Gratings	QR-C-05-05, Rev-0
5.24	Expansion Control	QR-C-05-07, Rev-0
5.25	Finish Carpentry / Counter Tops	QR-C-06-01/02, Rev-0
5.26	Bituminous Damp Proofing	QR-C-07-01, Rev-0
5.27	Building Insulation	QR-C-07-02, Rev-0
5.28	Roof and Deck Insulation	QR-C-07-03, Rev-0
5.29	Sprayed Fire Proofing	QR-C-07-04, Rev-0
5.30	Roofing System	QR-C-07-05, Rev-0
5.31	Sheet Metal Flashing and Trim	QR-C-07-06, Rev-0
5.32	Sealants and Caulking	QR-C-07-07, Rev-0
5.33	Doors and Windows	QR-C-08-01-08, Rev-0
5.34	Door Hardware	QR-C-08-09, Rev-0
5.35	Glazing	QR-C-08-10, Rev-0
5.36	Metal Stud Framing System / Board System and Ceiling	QR-C-09-01/03/06, Rev-0
5.37	Portland Cement Plaster	QR-C-09-02, Rev-0
5.38	Tile Work	QR-C-09-04, Rev-0



5.39	Stone Work	QR-C-09-05, Rev-0
5.40	Resilient Tile Flooring and Base	QR-C-09-07, Rev-0
5.41	Carpet Tiles	QR-C-09-08, Rev-0
5.42	Painting	QR-C-09-09, Rev-0
5.43	Solid Phenolic Toilet Compartments	QR-C-10-01, Rev-0
5.44	Access Flooring	QR-C-10-02, Rev-0
5.45	Signage	QR-C-10-03, Rev-0
5.46	Hammam Accessories	QR-C-10-04, Rev-0
5.47	Dock Bumpers	QR-C-11-04, Rev-0
5.48	Concrete Batch Plant	QR-C-BP-01, Rev-0



رخصة تجارية Commercial License

تفاصيل الرخصة / License Details

License No.	793392	رقم الرخصة
Company Name	GRAND TARGET TECHNICAL SERVICES L.L.C	اسم الشركة
Trade Name	GRAND TARGET TECHNICAL SERVICES L.L.C	الإسم التجاري
Legal Type	Limited Liability Company(LLC)	الشكل القانوني
Expiry Date	29/10/2023 تاريخ الإنتهاء	تاريخ الإصدار
D&B D-U-N-S @	0	رقم الرخصة الام
Register No.	1311725 رقم السجل التجاري	عضوية الغرفة
	Main License No.	793392
	DCCI No.	295884

الاطراف / License Members

Share / الحصص	Role / الصفة	Nationality / الجنسية	Name / الإسم	No. / رقم الشخص
	Manager / مدير	Jordan / الاردن	محمد موسى عبدالرحيم العطيات	653149
			MOHAMAD MOUSA ABDEL RAHIM ALATIYAT	

نشاط الرخصة التجارية / License Activities

Plaster Works	اعمال البلاستر
Water Pipelines & Stations Contracting	مقاولات انشاء شبكات ومحطات المياه واصلاحها
Electrical Fittings & Fixtures Repairing & Maintenance	إصلاح وصيانة التمديدات والتركيبات الكهربائية
Painting Contracting	اعمال الاصباغ والدهانات
Swimming Pools Installation Works	أعمال تركيب أحواض السباحة
Engraving & Ornamentation Works	اعمال النقش والزخرفة
Floor & Wall Tiling Works	أعمال تبليط الأرضيات والجدران
Carpentry & wood Flooring Works	أعمال النجارة و تركيب الأرضيات الخشبية
Sewage & Drainage Contracting	مقاولات انشاء شبكات ومحطات الصرف الصحي واصلاحها

العنوان / Address

Phone No	تليفون	P.O. Box	صندوق بريد
Fax No	فاكس	Parcel ID	رقم القطعة
Mobile No	هاتف متحرك		البريد الإلكتروني / Email

مكتب رقم 01-206 ملك عبدالجليل يوسف عبدالكريم درويش-مطار دبي الدولي

Print Date	25/10/2022 11:19	تاريخ الطباعة	Receipt No.	14643706	رقم الإيصال
------------	------------------	---------------	-------------	----------	-------------



يمكنك الآن تجديد رخصتك التجارية من خلال الرسائل النصية القصيرة، أرسل رقم الرخصة إلى 6969 (دو/اتصالات) للحصول على إذن الدفع.
Now you can renew your trade license by sending a text message (SMS). Send your trade license number to 6969 (Du/ Etisalat) to receive payment voucher.

Get FREE access to Zoho One for the first year
احصل على زوهو ون مجاناً للسنة الأولى



وثيقة إلكترونية معتمدة وصادرة بدون توقيع من دائرة الإقتصاد والسياحة في دبي. لمراجعة صحة البيانات الواردة في الرخصة يرجى مسح رمز الاستجابة السريعة this is a certified e-document issued without signature by the department of Economy and Tourism. Kindly Scan the QR Code to Verify the certificate

Remarks / الملاحظات

لا يجوز البدء أو القيام بتنفيذ مشاريع جديدة تابعة لإشراف البلدية أو أي جهة أخرى لحين توفير المعايير المطلوبة.
لا يجوز البدء أو القيام بتنفيذ مشاريع جديدة تابعة لإشراف البلدية أو أي جهة أخرى لحين توفير المعايير المطلوبة.
.Not permitted to start or execute any new projects under Dubai Municipality supervision or any other entity until all requirements are met

Attention
Refer to remarks

يرجى قراءة الملاحظات
تنبيه

Print Date 25/10/2022 11:19 تاريخ الطباعة

Receipt No.

14643706

رقم الإيصال



يمكنك الآن تجديد رخصتك التجارية من خلال الرسائل النصية القصيرة، أرسل رقم الرخصة إلى 6969 (دو/اتصالات) للحصول على اذن الدفع.
Now you can renew your trade license by sending a text message (SMS). Send your trade license number to 6969 (Du/ Etisalat) to receive payment voucher.

Get **FREE** access to Zoho One for the first year
احصل على زوهو ون مجاناً للسنة الأولى



Zoho.com/det

وثيقة إلكترونية معتمدة وصادرة بدون توقيع من دائرة الاقتصاد والسياحة في دبي. لمراجعة صحة البيانات الواردة في الرخصة يرجى مسح رمز الاستجابة السريعة
this is a certified e-document issued without signature by the department of Economy and Tourism .Kindly Scan the QR Code to Verify the certificate

ملحق الشركاء Partners

تفاصيل الرخصة / License Details

D&B D-U-N-S No.	®	0	الرقم العالمي License No.	793392	رقم الرخصة
--------------------	---	---	------------------------------	--------	------------

اصحاب الرخصة / License Partners

Share / الحصة	Sr. No./مسلسل الشخص	Nationality / الجنسية	Name / الإسم
51.0000000%	410399	الإمارات / United Arab Emirates	اسماعيل محمد جاسم / Ismail Mohamed Jasim Ali Alhosani على الحوسنى
25.0000000%	653149	الأردن / Jordan	محمد موسى / Mohamad Mousa Abdel Rahim Alatiyat عبدالرحيم العطيات
24.0000000%	320355	الأردن / Jordan	عبدالقادر عيد حسن الزعبي / Abdel Qader Eid Hasan Alzoubi

يرجى قراءة الملاحظات
تنبيه

Print Date 25/10/2022 11:19 تاريخ الطباعة

Receipt No.

14643706

رقم الإيصال



يمكنك الآن تجديد رخصتك التجارية من خلال الرسائل النصية القصيرة، أرسل رقم الرخصة إلى 6969 (دو/اتصالات) للحصول على إذن الدفع.

Now you can renew your trade license by sending a text message (SMS). Send your trade license number to 6969 (Du/ Etisalat) to receive payment voucher.

Get FREE access to Zoho One for the first year
احصل على زوهو ون مجاناً للسنة الأولى



Zoho.com/det

وثيقة إلكترونية معتمدة وصادرة بدون توقيع من دائرة الاقتصاد والسياحة في دبي. لمراجعة صحة البيانات الواردة في الرخصة يرجى مسح رمز الاستجابة السريعة this is a certified e-document issued without signature by the department of Economy and Tourism .Kindly Scan the QR Code to Verify the certificate

شهادة شهر قيد شركة في السجل التجاري Commercial Register

تفاصيل القيد / Register Details

Main Lice. Nr	793392	رقم الرخصة الأم	Register No.	1311725	رقم القيد
Company Name	جراند تارجت للخدمات الفنية ش.م.م GRAND TARGET TECHNICAL SERVICES L.L.C				
Legal Type	Limited Liability Company(LLC)			ذات مسؤولية محدودة	الشكل القانوني
Expiry Date	29/10/2023	تاريخ الإنتهاء	Reg. Date	30/10/2017	تاريخ الإصدار
D&B D-U-N-S No.			0		الرقم العالمي

تفاصيل رأس المال / Capital Details

Nominated	-1.0000				الإسمى
Paid	300,000.0000				المدفوع
No. of Shares	-1.0000				عدد الأسهم
Currency	UAE Dirhams				العملة

عنوان الرخصة / License Address

مكتب رقم 01-206 ملك عبدالجليل يوسف عبدالكريم درويش-مطار دبي الدولي

عنوان السجل التجاري / Commerce Address

مكتب رقم 01-206 ملك عبدالجليل يوسف عبدالكريم درويش-مطار دبي الدولي

أنشطة السجل / Register Activities

Floor & Wall Tiling Works	أعمال تليط الأرضيات والجدران
Painting Contracting	أعمال الاصباغ والدهانات
Carpentry & wood Flooring Works	أعمال النجارة وتركيب الأرضيات الخشبية
Engraving & Ornamentation Works	أعمال النقش والزخرفة
Electrical Fittings & Fixtures Repairing & Maintenance	إصلاح وصيانة التمديدات والتركيبات الكهربائية
Plaster Works	أعمال البلاستر
Swimming Pools Installation Works	أعمال تركيب أحواض السباحة
Sewage & Drainage Contracting	مقاولات انشاء شبكات ومحطات الصرف الصحي واصلاحها
Water Pipelines & Stations Contracting	مقاولات انشاء شبكات ومحطات المياه واصلاحها

Print Date 25/10/2022 11:19 تاريخ الطباعة

Receipt No.

14643706

رقم الإيصال



يمكنك الآن تجديد رخصتك التجارية من خلال الرسائل النصية القصيرة، أرسل رقم الرخصة إلى 6969 (دو/اتصالات) للحصول على اذن الدفع.
Now you can renew your trade license by sending a text message (SMS). Send your trade license number to 6969 (Du/ Etisalat) to receive payment voucher.

Get FREE access to Zoho One for the first year
احصل على زوهو ون مجاناً للسنة الأولى



Zoho.com/det

وثيقة إلكترونية معتمدة وصادرة بدون توقيع من دائرة الاقتصاد والسياحة في دبي. لمراجعة صحة البيانات الواردة في الرخصة يرجى مسح رمز الاستجابة السريعة this is a certified e-document issued without signature by the department of Economy and Tourism .Kindly Scan the QR Code to Verify the certificate

شهادة تسجيل العضوية

Membership Certificate

License no.	793392
Membership no.	295884
Registration no.	1311725
Trade Name	GRAND TARGET TECHNICAL SERVICES L.L.C
Legal Status	Limited Liability Company(LLC)
Activity	Sewage & Drainage Contracting Water Pipelines & Stations Contracting Floor & Wall Tiling Works Painting Contracting Carpentry & wood Flooring Works Engraving & Ornamentation Works Electrical Fittings & Fixtures Repairing & Maintenance Plaster Works Swimming Pools Installation Works
Member Since	30/10/2017
Date of Issue	30/10/2017
Expiry Date	29/10/2023

رقم الرخصة	793392
رقم العضوية	295884
رقم السجل التجاري	1311725
الاسم التجاري	جراند تارجت للخدمات الفنية ش.ذ.م.م
الشكل القانوني	ذات مسؤولية محدودة
نوع النشاط	مقاولات انشاء شبكات ومحطات الصرف الصحي واصلاحها مقاولات انشاء شبكات ومحطات المياه واصلاحها أعمال تبليط الأرضيات والجدران اعمال الاصباغ والدهانات أعمال النجارة وتركيب الأرضيات الخشبية اعمال النقش والزخرفة إصلاح وصيانة التمديدات والتركيبات الكهربائية اعمال البلاستر أعمال تركيب أحواض السباحة
تاريخ الإنتساب	30/10/2017
تاريخ الإصدار	30/10/2017
تاريخ الإنتهاء	29/10/2023

Remarks

This certificate shall be invalid incase of any alteration without chamber's authorization

For online verification of this Certificate, please visit our website
<http://www.dubaichamber.ae/verify>

غرفة تجارة وصناعة دبي
Dubai Chamber of Commerce & Industry

P.O. Box 1457 - Dubai, U.A.E. | Tel (Within UAE) 800 CHAMBER (800 2426237) | Tel (Outside UAE) (+971) 4 2280000 هاتف
فاكس (+971) 4 2211646 | customercare@dubaichamber.ae | www.dubaichamber.ae

الملاحظات

تعتبر هذه الشهادة لاغية في حال أي كسب أو تعديل عليها دون اعتماد ذلك من الغرفة

للتأكد من صحة بيانات الشهادة يرجى الرجوع إلى موقع الغرفة
<http://www.dubaichamber.ae/verify>



شهادة تسجيل لضريبة القيمة المضافة في الامارات العربية المتحدة
Certificate of Registration for Value Added Tax in the United Arab Emirates

The Federal Tax Authority certifies that the entity below is
a registered person for Value Added Tax in the UAE

دھشدرۃ ۃئھهلا ۃیداحزللا ب نارضلا نأ ۃھجلا ۃیلانلا ۃلجسم ۃبیرضلا ۃمیعلا
ۃفاضملا یف نارامللا ۃبیرعلا ۃدحتملا

Full Arabic legal name	جراند تارحت للخدمات الفنية ش.ذ.م.م	الاسم القانوني الكامل باللغة العربية
Full English legal name	GRAND TARGET TECHNICAL SERVICES L.L.C	الاسم القانوني الكامل باللغة الانجليزية
Registered address	مكتب رقم 105 - ملك مؤسسة محمد بن راشد للأعمال الإنسانية- القصص الصناعية الرابعة DUBAI , United Arab Emirates, O, +971505321501	ناونعلا ل.جسملا
Tax Registration Number	100486106600003	رقم التسجيل الضريبي
Effective Registration Date	01/09/2018	تاريخ التسجيل الفعلي
First VAT Return Period	01 Sep 2018- 30 Sep 2018 and quarterly thereafter	ۃرتف لوأ رارقلا ۃبیرضلا ۃمیعلا ۃفاضملا
VAT Return due date	28 Oct 2018	تاريخ استحقاق إقرار ضريبة القيمة المضافة

Start and end dates of Tax periods: 1 Apr to 30 Jun, 1 Jul to 30 Sep, 1 Oct to 31
Dec, 1 Jan to 31 Mar

ۃیادب ۃیاهنو تارتنفلا ۃبیرضلا

یجرید کأئلا نم ۃحص ل یصافۃ ۃداهشللا .بجر غلابلا ۃئھهلا ۃیداحزللا ب نارضلا یف لاد ربیغت سسللا یئلا تلص ۃھیف یل ۃمقر لیجستلا
ی بیرضلا صاخلا کب .

Please check that the details on this certificate are correct. You must inform the Federal Tax Authority of any change on the
basis of which you obtained your Tax Registration Number.



Issuing Date:

01/11/2018

تاریخ الإصدار



**Company Profile
List of Project & Status**

Sl. No	Project Name	Client	Status
1	DS220 House Connection and Miscellaneous Works	Nael Construction and Contracting	Completed
2	DS198/1 Upgrading Subsidiary Sewer Pumping Station G1 to G7	Al Nubla General Contracting LLC	Completed
3	Maintenance Improvement and Upgrade of Sheikh Hamdan Bin Abdulla Road – Al Fujairah	ETHPE Contracting LLC	Completed
4	Arcadia Secondary School	Al Shirawi Contracting Co. LLC	Completed
5	House Connection Works – Wafi Hotel Complex & Mall Extension Phase 8	MKM Commercial Holdings LLC	Completed
6	Sewerage Line Connection – Ibn Battuta Mall	Larsen & Toubro Limited, Construction	Completed
7	Drainage work outside the plot for Main Connection – ADNOC (Studio City)	Amana Contracting & Steel Building Company WLL	Completed
8	Sewerage FIC Connection - JVC	Lootah Real Estate Development LLC	Completed
9	House Connection – Jumeirah Park (Clubhouse & Retail)	GBH International Contracting LLC	Completed
10	Construction of New 132/11kv Substation-BNYSSQUR	Larsen & Toubro Limited, Construction	Completed
11	Construction of Family B+G+4 & Bachelor G+S Accommodation at Warsan II	Ginco General Contracting LLC	Completed
12	Modification of Connection of the Main Manhole of Nakheel (House Connection)	Vakil Ghulam Abbas Wahid Ali	Completed



Company Profile

List of Project & Status

12	MBR-Package 49, Installation of Interlock & Kerbstone	De Tech Contracting LLC	Completed
13	TSE TIE at Palm Jumeirah, Buffer Tank & related Civil Works	Aresco Engineering & Trading LLC	Completed
14	House Connection	Al Rams Prime Construction	Completed
15	Proposed Park View Tower B+G+UG+4P+19 floors Residential Bldg.	Tak Construction LLC	Completed
16	New Gate Acces, Entrance & Exit	Open Eye Community Owners Association Mgt. Services	Completed
17	Residential Villa G+1, Al Barsha South 5 th , JVT01IVIL030 & JVT01IVIL031	Platinum House Contracting	Completed
18	Dubai land residence complex (DLRC) Phase-1 Area-4. Zone 2	ARCO Contracting LLC	Completed
19	Construction, Supply, Installation, Testing & Commissioning of Marasi – 132/11KV S/S and Associated Works	AL FANAR	Completed
20	R1075 – INTERNAL ROADS at NAD AL SHEBA 2, Sewerage Manhole Refurbishment Works	ASGC Construction LLC	On-going
21	G+1+Roof+Service Block+Garde Room+Parking+Boundary Wall Plot No. 2813448, House Connection Works	Granada Europe Engineering Construction LLC	Completed
22	Etihad Rail Project – Stage Two – Package 2B, Kizad Ducts	Elite Road Supplies Co. - ECO	Completed
23	R1075 – Internal Roads at Nad Al Sheba 2, Removal and Laying of Kerbstone	ASGC Construction LLC	On-going



Company Profile

List of Project & Status

24	HOUSE CONNECTION (various areas)	Dubai Municipality	Completed
25	Construction, Supply, Installation, Testing & Commissioning of Umm Ramool – 132/11KV S/S and Associated Works	AL FANAR	Completed
26	Masjid Shekah for Islamic Affairs & Charitable Activities Department on Plot No.345-415, Business Bay (Pipe Works)	AL SHAFAR	Completed
27	Construction of G+4 Floor, (Liwan 2) Wadi Al Safa, Dubai (House Connection Works)	AL ISHRAK CONTRACTING CO. LLC	Completed
28	Ground + 1 + Roof - Plot No. 3341668 (House Connection Works)	ALANDLOS CONTRACTING LLC	Completed
29	Residential & Commercial Tower at Plot No. 345-883, Burj Khalifa Dubai – Utility Service Connection for MEP	SHAPOORJI PALLONJI MIDEAST LLC	On-going